

# **SPEED TOUCH PC**

## **ADSL Modem Card**



**Installation Guide**

**V2.1.4**

**47-060015-001**



**[www.alcateldsl.com](http://www.alcateldsl.com)**



---

## Table of Contents

Congratulations!	1
<b>Step 1 – Know your PC’s Operating System</b>	<b>1</b>
<b>Step 2 – Determine your Connection Settings</b>	<b>2</b>
<b>Step 3 – Install the ADSL Modem Card</b>	<b>3</b>
<b>Step 4 – Install the Drivers and Make a Connection</b>	<b>5</b>
Windows 95A	6
Windows 95B	9
Windows 98, 98SE	12
Windows Millennium	14
Setting the ADSL Configuration	15
Making RFC 1483 connection - 95A, 95B, 98, 98SE, Me	16
Making a RFC 2364 connection - 95A, 95B, 98, 98SE, Me	19
Windows 2000	20
Setting the ADSL Configuration	22
Making a RFC 1483 connection - 2000	23
Making a RFC 2364 connection - 2000	25
Windows NT4.0 - RFC 1483	26
Windows NT4.0 - RFC 2364	28
 <b>Appendix</b>	
Removing Drivers	32
Diagnostic Tools	33
Trouble Shooting	35
Connector Pin-out	36
System Requirements & Compliance information	37
Copyright & Regulatory Information	37



# Congratulations!

You are about to accelerate into ADSL technology. Your new ADSL modem card is an internal Asymmetric Digital Subscriber Line (ADSL) PCI modem card, which conveniently plugs into your computer system. The modem connects directly to your telephone line via a standard connector.

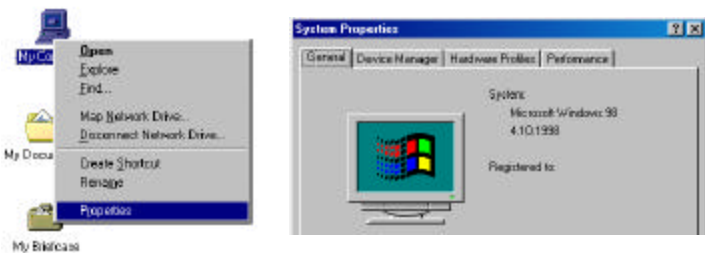
This guide is designed to walk you through installation of your ADSL Modem card in the easiest and quickest way possible. Please follow the instructions carefully.



## Step 1 – Know your PC's Operating System

You will need to know the exact version of Microsoft Windows installed in your computer. If you do not know or are unsure, please proceed as follows to determine your version of the Microsoft Operating System.

On your desktop, right-click **My Computer**. Then select **Properties**. The version number of the Microsoft Windows Operating System installed in your computer will be



displayed on the **General** tab. Refer to the following table for more detailed information.

Windows OS	System Properties Description	Release (Microsoft Web)
Win 95A	4.00.950A	Windows 95 OSR1
Win 95B	4.00.950B	Windows 95 OSR2
Win 98	4.10.1998	Window 98
Win 98SE	4.10.2222A 2nd Edition	Windows 98 2nd Edition
Win 2000	5.00.2195	Windows 2000
Win Me	4.90.3000	Windows Millennium
Win NT	4.00.1381	Windows NT 4.0

If you have questions regarding your PC system and the Microsoft Windows Operating System, please contact your original PC manufacturer or Microsoft for assistance.

Before Installing the ADSL PCI Modem Card, it is important to verify that the ADSL data port RJ-11 jack is configured so that the center two pins, pins 2 and 3, are used for ADSL data. If the ADSL data port installation uses pins 1 and 4 for data, then a wiring converter

will be required. Do not alter or remove a wiring converter if present. Consult with your provider regarding a wiring converter or before attempting any wiring changes.

## Step 2 – Determine your Connection settings

You need to know your PC systems **Windows OS** and **Internet Protocol** supplied by your ADSL service provider. Refer to the following chart for your **ADSL Driver**.

Protocol Selection		
<b>RFC1483</b>	⇒	Bridged Ethernet over ATM
<b>RFC2364</b>	⇒	Point-to-Point Protocol over ATM

ADSL Driver Selection	RFC1483	RFC2364
Win 95A & 95B	1483w95	2364w95
Win 98 & 98SE	1483w98	2364w98
Win 2000	1483w2k	2364w2k
Win Millennium	1483wMe	2364wMe
Win NT 4.0	1483nt4	2364nt4

Having determined the ADSL Driver you will be installing, you now need to gather the connection information supplied by your ADSL service provider.

**VPI value:** \_\_\_\_\_

**VCI value:** \_\_\_\_\_

**Framing:** ☐ VC/MUX ☐ LLC/SNAP

**Mode:** ☐ ANSI T1.413 ☐ ITU G.lite ☐ ITU G.dmt

For RFC 1483	For RFC 2364
<b>Host:</b>	<b>User Name:</b>
<b>Domain:</b>	<b>Password:</b>
<b>Gateway:</b>	<b>Host or IP Address:</b>
<b>IP Address:</b>	
<b>Subnet Mask:</b>	
<b>DNS or server address:</b>	

## Step 3 – Install the ADSL modem card

*Caution: To avoid possible damage to your modem card, touch the metal chassis of your PC system to remove static charge from your person, and then remove your ADSL modem card from the protective anti-static bag.*

1. Shut down your computer and **switch the power off.**
2. **Unplug the power cord** for your computer from the electrical outlet.
3. **Remove the cover** from your systems chassis (see your PC manufacturer's manual).
4. **Unscrew “metal slot cover bracket”** from an unused PC motherboard PCI connector (usually white in color).





7. Gently and evenly **insert the PCI modem card** into your empty PCI slot.



8. Make sure the card is firmly seated, and then **secure the card with the bracket screw**.



9. **Replace the cover** of your computer system and **Connect the ADSL/phone line** to the connector port on the modem card. Then plug the other end of the cable into your ADSL/phone service.



## Step 4 – Install the drivers and make a connection

---

You will be installing drivers and then proceeding to make an Internet connection. This process requires you to enter in information as prompted by the Microsoft Installation Wizard.

**NOTE:** You may need the Microsoft Windows Operating System installation files (CAB files) to complete the installation. The CAB files are contained in the Microsoft's system CD-ROM. Some systems may have already installed the CAB files to the hard drive, but you should have the Microsoft Windows CD-ROM handy just in case.

**Proceed now to the installation procedure for the Windows Operating System installed in your computer.**

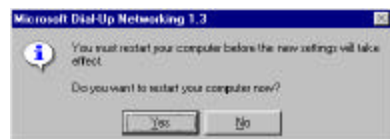
Windows 95A -----	Page 6
Windows 95B -----	Page 9
Windows 98, 98SE-----	Page 12
Windows Millennium-----	Page 14
Windows 2000 -----	Page 20
Windows NT - RFC 1483 -----	Page 26
Windows NT - RFC 2364-----	Page 28

## Windows 95A

After installing the ADSL modem card, plug the power cable back into the PC system and turn the power on.

Before you proceed to install drivers, you will need to upgrade your Dial-Up Networking (DUN) application to version 1.3 or above. The Microsoft DUN is conveniently contained on your ADSL Driver CD-ROM.

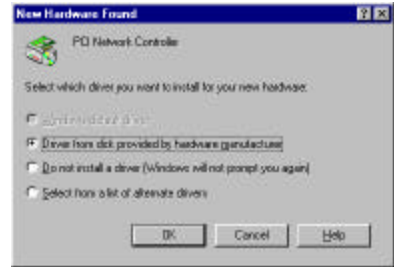
1. After restart, the **New hardware found** will detect the ADSL modem as a **PCI Network Controller**. **CANCEL** the **New hardware found** window.
2. At your desktop, click **Start**, and then select **Run**.
3. The **Run** window appears. **Insert the ADSL Driver CD**, then click on **Browse** and proceed to locate the ADSL Driver 95 CD-ROM. Then locate and select the **Msdun13.exe** file. The **Msdun13.exe** appears in the Open box. Click **OK**.
4. The **Microsoft Dial-Up Networking 1.3** window appears with the message **This will install Microsoft Dial-Up Networking 1.3 for Windows 95. Do you wish to continue?** Click **Yes**.
5. An **End-User License Agreement** will appear. To accept, click **Yes**.
6. Back in the Microsoft Dial-Up Networking 1.3 window. You will be



asked: **Do you want to restart your computer now?** Click Yes.

**NOTE:** You may need the Microsoft Windows Operating System installation files (CAB files) to complete the installation. The CAB files are contained in the Microsoft's system CD-ROM. Some systems may have already installed the CAB files to the hard drive, but you should have the CD-ROM handy just in case.

7. The **New Hardware Found** window will detect the ADSL modem card as a **PCI Network Controller**. Select the **Driver from disk provided by hardware manufacturer** option. Click **OK**.



8. Insert the **ADSL Driver** CD-ROM into your systems CD drive.

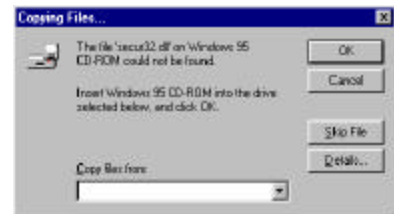
9. The **Install From Disk** window appears. Click **Browse** to locate the driver on your CD-ROM for the protocol supported by your ADSL provider: **1483w95** or **2364w95** (The example uses "D" as the CD-ROM drive letter. Your drive letter may differ.) Then click **OK**.



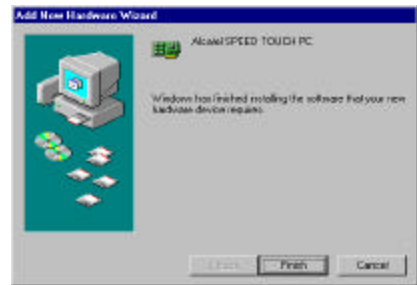
**NOTE:** During the installation process you may be asked to insert your Windows 95 CD. Insert the **Windows 95 CD** into the CD drive and click **OK**.



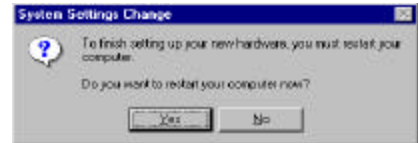
**NOTE:** If during the file copying process a file is reported as "not found" enter the path with the CD Drive letter and **:Win95** (ex:D:\Win95).



10. At the conclusion of the ADSL modem driver installation, the **Add New Hardware Wizard** window appears and displays your newly installed **Alcatel Speed Touch PC** software. Click **Finish**.



11. The **System Settings Change** window appears. For the PC system to set up the **Alcatel Speed Touch PC**, a system **Restart** is required. Click **Yes**.



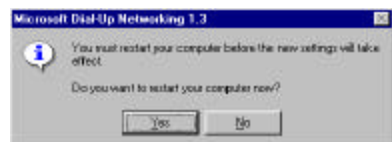
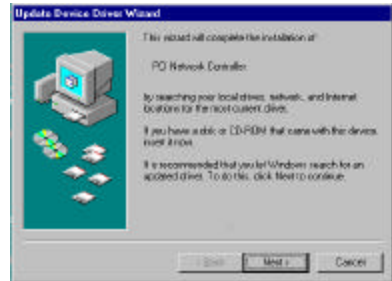
**NOTE: After restarting the system, the Diagnostic Tool icon (See Appendix) is active and monitoring connectivity.**

12. You must now set the ADSL Configuration. **Go to page 15.**

## Windows 95B

After installing the ADSL modem card, plug the power cable back into the PC system and turn the power on. Before you proceed to install drivers you will need to upgrade your Dial-Up Networking (DUN) application to version 1.3 or above. The Microsoft DUN is conveniently contained on your ADSL Driver CD-ROM.

1. After restart, the **Update Device Driver Wizard** will detect the ADSL modem card as a **PCI Network Controller**. **CANCEL** the **Update Device Driver Wizard** window.
2. At your desktop, click **Start**, and then select **Run**.
3. The **Run** window appears. **Insert** the **ADSL Driver CD**, then click on **Browse** and proceed to locate the ADSL Driver 95 CD-ROM. Then locate and select the **Msdun13.exe** file. The **Msdun13.exe** then appears in the Open box. Click **OK**.
4. The **Microsoft Dial-Up Networking 1.3** window appears with the message **This will install Microsoft Dial-Up Networking 1.3 for Windows 95. Do you wish to continue?** Click **Yes**.
5. An **End-User License Agreement** will appear. To accept, click **Yes**.
6. Back in the **Microsoft Dial-Up Networking 1.3** window. You will be

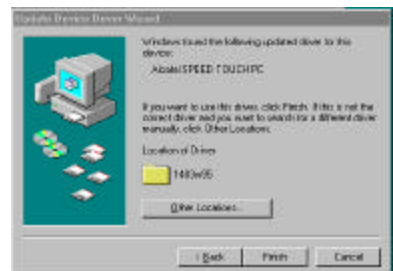
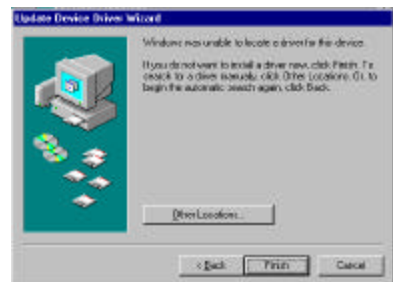


asked **Do you want to restart your computer now?** Click Yes.



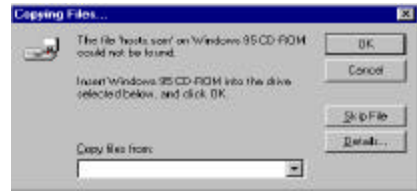
**NOTE:** You may need the Microsoft Windows Operating System installation files (CAB files) to complete the installation. The CAB files are contained in the Microsoft's system CD-ROM. Some systems may have already installed the CAB files to the hard drive, but you should have the CD-ROM handy just in case.

7. The **Update Device Driver Wizard** will detect the ADSL modem card as a **PCI Network Controller**, click **Next**.
8. Insert the **ADSL Driver** CD-ROM into your systems CD drive.
9. The **Update Device Driver Wizard** will appear and indicate that “**Windows was unable to locate a driver for this device**”. Click **Other Locations**.
10. The **Select Other Location** window appears. Click **Browse** to locate the driver on your CD-ROM for the protocol supported by your ADSL provider:  
**1483w95 or 2364w95**  
(The example uses “E” as the CD-ROM drive letter. Your drive may have a different letter.) Then click **OK**.
11. The **Update Device Driver Wizard** will then find the **Alcatel Speed Touch PC**. Click **Finish**.

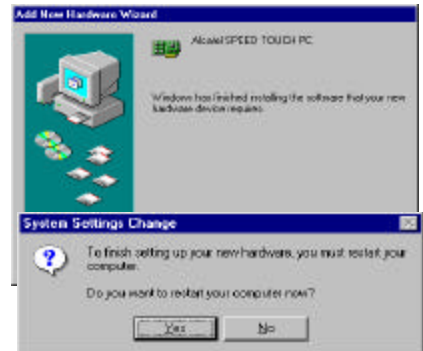


**NOTE:** During the installation process you may be asked to insert your Windows 95 CD-ROM. Insert the **Win95 CD** into the drive. Click **OK**.

**NOTE:** If during the file copying process a file is reported as “not found” enter the path (CD Drive letter) and :\Win95 (ex. D:\Win95)



13. At the conclusion of the ADSL modem driver installation, the **Add New Hardware Wizard** window appears and displays your newly installed **Alcatel Speed Touch PC** software. Click **Finish**.



14. The **System Settings Change** window appears. For the PC system to set up the **Alcatel Speed Touch PC**, a system **Restart** is required. Click **Yes**.

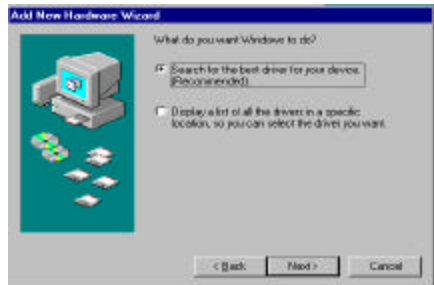
**NOTE:** After restarting the system, the **Diagnostic Tool** icon (See Appendix) is active and monitoring connectivity.

15. You must now set the ADSL Configuration. **Go to page 15.**

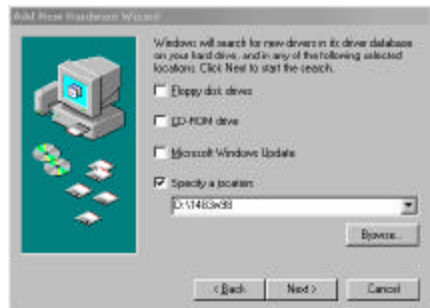
## Windows 98, 98SE

After installing the ADSL modem card, plug the power cable back into the PC system and turn the power on.

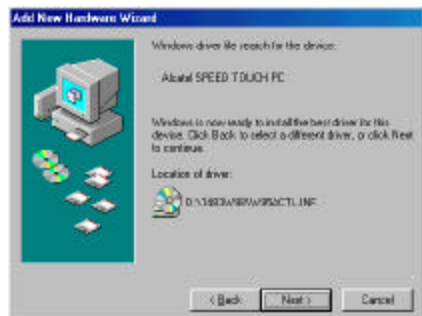
1. The **Add New Hardware Wizard** window will automatically appear to indicate that a new **PCI Network Controller** has been found. Click **Next**.
2. Still in the **Add New Hardware Wizard**. You will be asked “**What do you want Windows to do?**” Select the **Search for the best driver for your device** option, then click **Next**.
3. Insert the **ADSL Driver CD** into your systems CD-ROM drive.



4. Select **Specify a location** and click **Browse** to locate the driver on your CD-ROM for the protocol supported by your ADSL provider: **1483w98** or **2364w98**. Click **Next**.



5. The **Add New Hardware Wizard** will appear and indicate the **Alcatel Speed Touch PC** has been recognized and will install a new driver. Click **Next**.



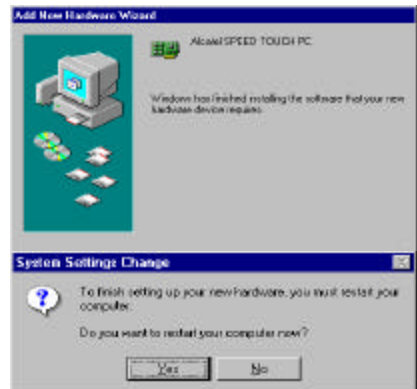
6. If prompted to insert your Windows CD, do so at this time, then click **OK**.



7. Enter the [CD drive Letter] and then :\Win98 (e.g: E:\Win98) and click **OK**.



12. At the conclusion of the ADSL modem driver installation, the **Add New Hardware Wizard** window appears and displays your newly installed **Alcatel Speed Touch PC** software. Click **Finish**



9. The **System Settings Change** window appears. For the PC system to set up the **Alcatel Speed Touch PC**, a system **Restart** is required. Click **Yes**.

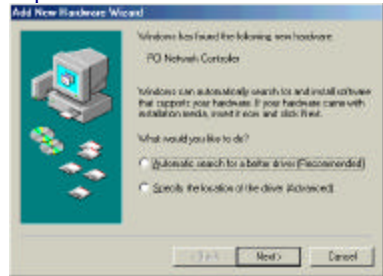
**NOTE:** After restarting the system, the **Diagnostic Tool** icon (See Appendix) is active and monitoring connectivity.

10. You must now set the ADSL configuration. **Go to page 15.**

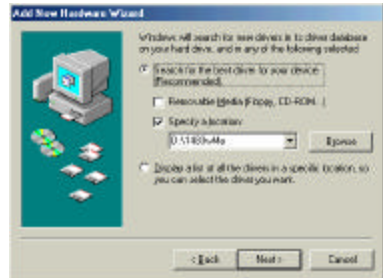
## Windows Millennium

**NOTE:** After installing the ADSL modem card, plug the power cable back into the PC system and turn the power on. Insert the driver CD upon restart.

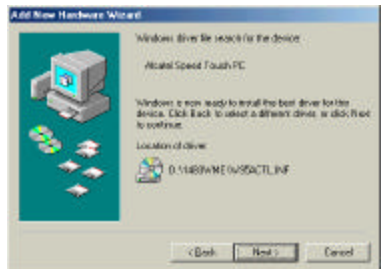
1. The **Add New Hardware Wizard** window will automatically appear to indicate that a new **PCI Network Controller** has been found. Select the **Specify the location of the driver** option. Click **Next**.



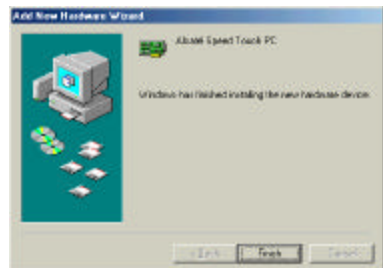
2. Still in the **Add New Hardware Wizard**. Click the scroll arrow to locate the driver on your CD-ROM for the protocol supported by your ADSL provider: **1483wME** or **2364wME**. (The example uses “D” as the CD-ROM drive letter. Drive letters may vary.) Then click **Next**.



3. The **Add New Hardware Wizard** window now displays your newly installed **Alcatel Speed Touch PC**. Click **Next**.

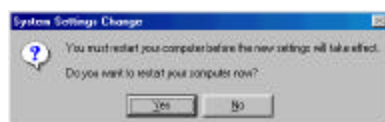


4. The **Add New Hardware Wizard** has now finished installing the new hardware device. Click **Finish**



5. The **System Setting Change** window appears. Click **Yes** to restart your PC system and to allow the new changes to take effect. You must now set the

ADSL configuration. **Go to page 15.**

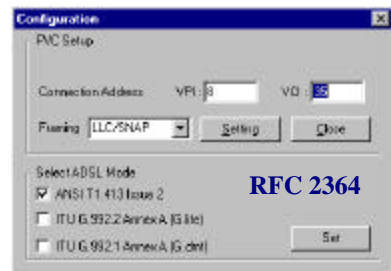
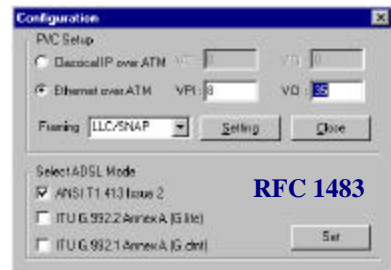
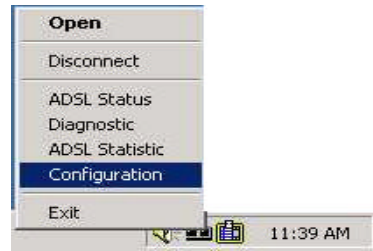


## Setting the Configuration

1. After your PC has rebooted, right-click on the **Mapi Icon**, and select the **Configuration** option.
2. The **Configuration** window appears. This is the **Network Protocol** and **PVC settings** section. Enter in the **VPI**, **VCI**, and **Framing** values supplied by your ADSL service provider.
3. In the **Select ADSL Mode** section, select the mode(s) recommended by your ADSL service provider. Click on the mode(s) required and then click on **Settings**.

**NOTE:** The service mode type will be one of the following:

- ? **ANSI T1.413 Issue 2**
- ? **ITU G.992.2 Annex A (G.lite)**
- ? **ITU G.992.1 Annex (G.dmt)**



4. The **PVC Setup** window appears. Click **Yes** to restart your PC system and to allow the new changes to take effect.
5. You must now make an ADSL



**RFC1483** Bridged Ethernet over ATM



**Go to page 16**

**RFC2364** Point-to-Point Protocol over ATM

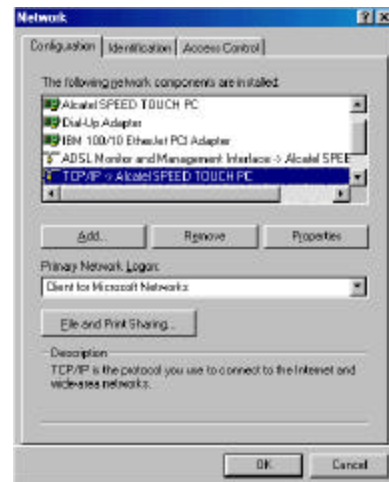
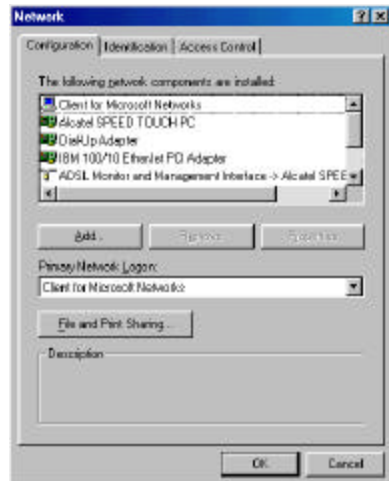


**Go to page 19**

## Making an ADSL connection

### RFC 1483 – Bridged Ethernet over ATM – Win95, Win98, WinMe

1. From the **Start** menu on the tool bar, select **Settings, Control Panel**, and then double-click on the **Network** icon.
2. The **Network** window appears. Select the **Configuration** tab, scroll the installed network component window and find **Alcatel Speed**
3. Scroll the installed network component window and select **TCP/IP → Alcatel Speed Touch PC**. Then click the **Properties** button.

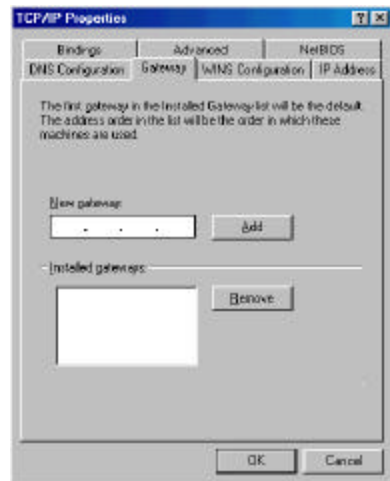




4. The **TCP/IP Properties** window will appear. Select the **IP Address** tab and then select the **Specify an IP Address** option. Enter the **IP Address** and **Subnet Mask** settings supplied by your ADSI . provider.



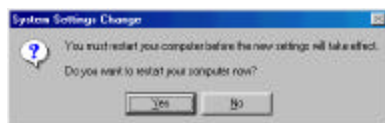
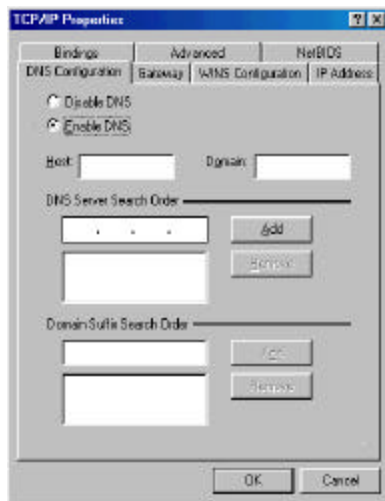
5. To setup a new gateway, select the **Gateway** tab, and then enter the setting in the **New Gateway** section. Click **Add**.



6. Select **DNS Configuration** tab. Select the **Enable DNS** option.

**NOTE:** You now need to have available the **Host**, **Domain** and **DNS** settings supplied by your ADSL service provider.

7. Enter your host name into **Host:** box.
8. Enter your domain name into **Domain:** box.
9. Enter **DNS** number into **DNS Server Search Order** box and click **Add**. If you have more than one **DNS** numbers, repeat this step.
10. The **Network** window appears. Click **OK**.
11. After setting all the necessary TCP/IP properties, click **OK**.
12. The **System Setting Change** window appears. You will be asked if you want

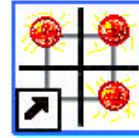


***Congratulations, you are done. Your ADSL Internet connection is established!***

## Making an ADSL connection

### RFC 2364 - Point-to-Point Protocol over ATM – Win95, Win98, WinMe

1. Double-click on the **Alcatel Connect** icon that appears on your desktop.



**Alcatel Connect**

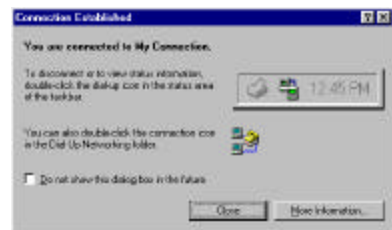
2. The **Connect To** window appears. Enter the **User Name** and **Password** supplied by your Internet service provider (ISP). Then click **Connect**.



3. The **Connecting to My Connection** window appears. The message **Logging on to network** confirms a valid connecting process.



4. The **Connection Established** window appears. Internet service is now established. Click **Close** and then the **Diagnostic tool** icon will appear on the task bar.

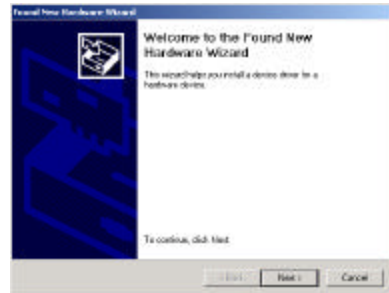


***Congratulations, you are done. Your ADSL Internet connection is established!***

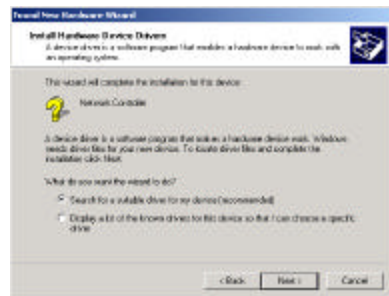
## Windows 2000

After installing the ADSL modem card, plug the power cable back into the PC system and turn the power on.

1. After installing the ADSL modem card, power on the PC system. After start-up, the **Found New Hardware Wizard** will appear. Click **Next**.



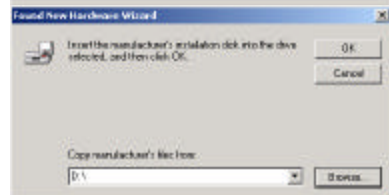
2. Still in the **Found New Hardware Wizard**, select the **Search for a suitable device...** option. Click **Next**.



3. Next you will be prompted for software drivers. Select **Specify a location**. Click **Next**.



4. Insert the **ADSL Driver** CD into the systems CD-ROM drive. Click **Browse** to locate the driver on your CD-ROM for the protocol supported by your ADSL provider: **1483w2K** or **2364w2K**. (The example uses "D" as the CD-ROM

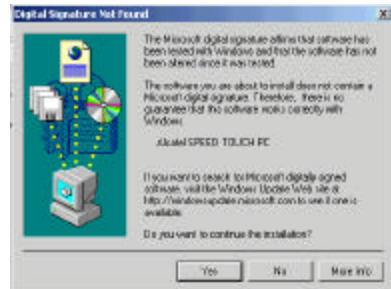


drive letter. Your drive may have a different letter.) Click **OK**.

5. The **Found New Hardware Wizard** will then find the **Alcatel Speed Touch PC**, click **Next**.



6. The **Digital Signature Not Found** window appears. You will be asked; **Do you want to continue installation?** Click **Yes**.



7. The **Found New Hardware Wizard** will prompt that **Windows has finished installing the software for this device**. Click **Finish**.

**NOTE:** You may be asked if you want to restart your computer, if so click **Yes**. If you are not asked, you need to restart your computer manually at this time.



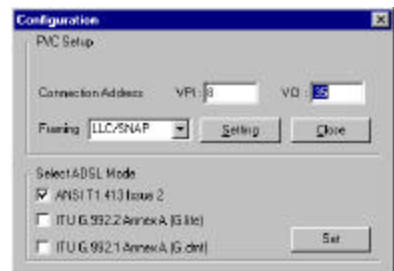
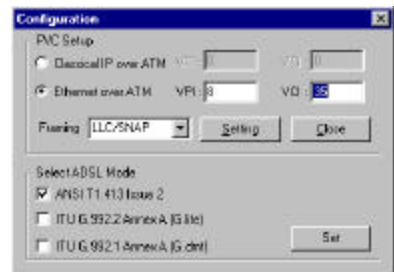
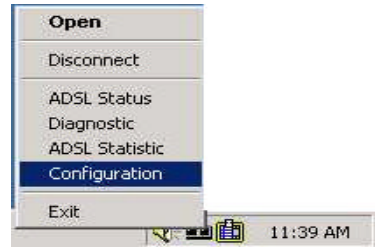
8. You must now set the ADSL configuration. **Go to page 22**

## Setting the Configuration

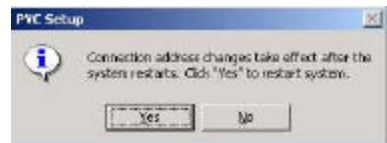
6. After your PC has rebooted, right-click on the **Mapi Icon**, and select the **Configuration** option.
7. The **Configuration** window appears. This is the **Network Protocol** and **PVC settings** section. Enter in the **VPI**, **VCI**, and **Framing** values supplied by your ADSL service provider.
8. In the **Select ADSL Mode** section, select the mode(s) recommended by your ADSL service provider. Click on the mode(s) required and then click on **Settings**.

**NOTE:** The service mode type will be one of the following:

- ? **ANSI T1.413 Issue 2**
- ? **ITU G.992.2 Annex A (G.lite)**
- ? **ITU G.992.1 Annex (G.dmt)**



9. The **PVC Setup** window appears. Click **Yes** to restart your PC system and to allow the new changes to take effect.
10. You must now make an ADSL

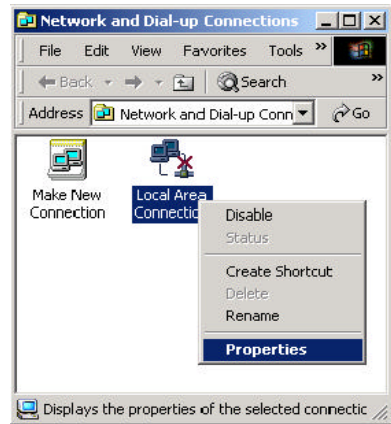


**RFC1483** Bridged Ethernet over ATM ➡ **Go to page 23**  
**RFC2364** Point-to-Point Protocol over ATM ➡ **Go to page 25**

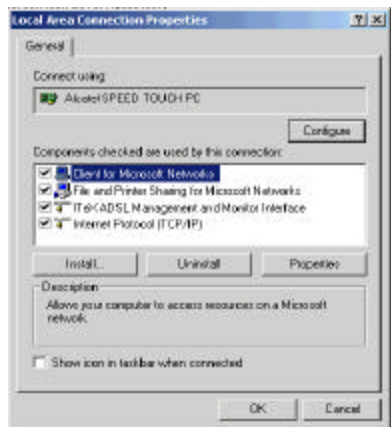
## Making an ADSL connection

### RFC 1483 – Bridged Ethernet over ATM – Win2000

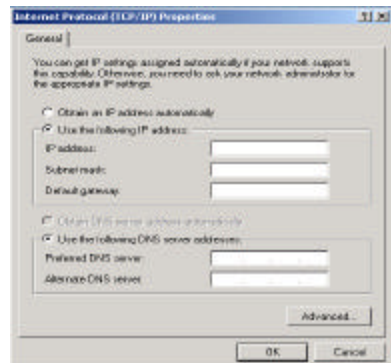
1. Double-click **My Computer**, **Control Panel**, and then **Network and Dial-up Connections**.
2. The **Network and Dial-up Connections** window appears. Right-click on the **Local Area Connection**, and then click on **properties**.



3. The **Local Area Connection Properties** window appears. Click on **Internet Protocol (TCP/IP)**, then click on **Properties**.

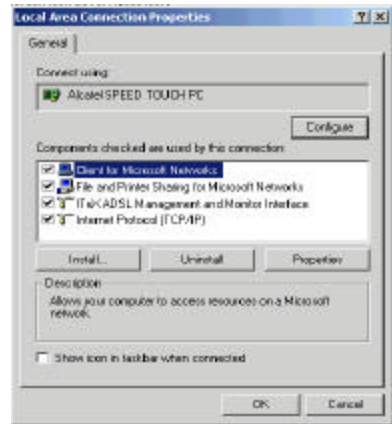


4. The **Internet Protocol (TCP/IP) Properties** window appears. Under the **General** tab, enable **Use the following IP address**. The default settings for IP configurations will turn from **gray** to **clear**. Enter in the **IP address**, **Subnet Mask**, and **Default Gateway** supplied by your ADSL service provider. Click **OK**.

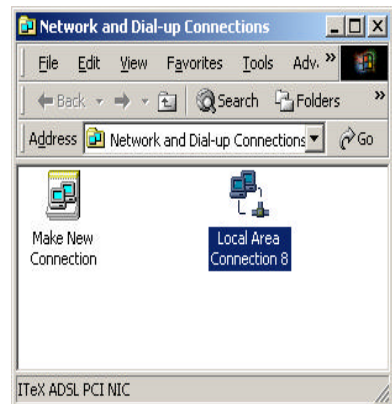




5. The previous **General Tab** window appears. Click **OK**.



6. The **Network and Dial-up Connection** window appears. **CLOSE** this window and your connection is complete.

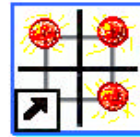


***Congratulations, you are done. Your ADSL Internet connection is established!***

## Making an ADSL connection

### RFC 2364 - Point-to-Point Protocol over ATM – Win2000

1. Double-click on the **Alcatel Connect** icon that appears on your desktop.

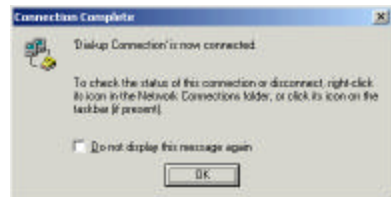


**Alcatel Connect**

2. The **Connect My connection** window will appear. Enter your **User Name** and **Password** supplied by your ADSL service provider. You are now ready to make a network connection. Click **Dial**.



3. The **Connection complete** window appears, click **OK**.



***Congratulations, you are done. Your ADSL connection is established!***

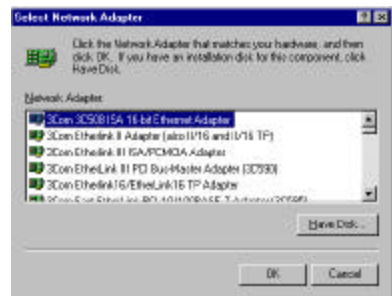
## Windows NT4.0

### RFC 1483 – Bridged Ethernet over ATM

1. On your desktop, double-click **My Computer**, and then double-click **Control Panel**.
2. In the **Control Panel** window, double-click the **Network** icon. The **Network** window appears. Select the **Adapters** tab and then click **Add**.



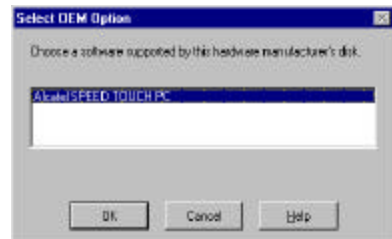
3. The **Select Network Adapter** window appears. Click **Have Disk**.
4. Insert **ADSL Driver** CD-ROM into your systems CD drive.



5. The **Insert Disk** window appears. Click **Browse** to locate the driver on your CD-ROM for the protocol supported by your ADSL provider: **1483NT4** (The example uses "d" as the CD-ROM drive letter. Your drive may have a different letter.) Click **OK**.



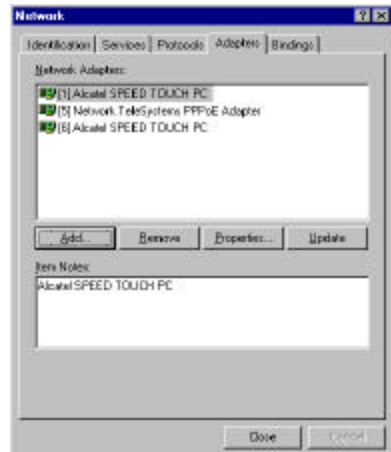
6. The **Select OEM Option** window will find **Alcatel Speed Touch PC**. Click **OK**.



7. The **Network** window will appear. Click the **Adapters** tab to verify that **Alcatel Speed Touch PC** has been found. Click on the **Protocols** tab and verify that **ADSL Management and Monitor Interface** is present. When you have verified these items, click **Close**.

**NOTE:** To review the Network window properties at any time, right-click the **Network Neighborhood** icon and select **Properties**.

**NOTE:** If no previous network devices have been installed, then the **Network Neighborhood** icon will not be present on your desktop. To open the Network window, double-click **My Computer** then **Control Panel**, and then **Network**.



8. The **Microsoft TCP/IP Properties** window appears. Enter in the **IP Address**, **Subnet Mask**, and **Default Gateway** supplied by your ADSL service provider. Click **OK**.



9. The **Network Settings Change** window appears. You must now re-start your computer for the settings to take effect. Click **Yes**.

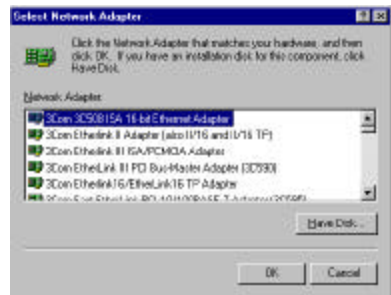


*Congratulations, you are done. Your ADSL connection is established!*

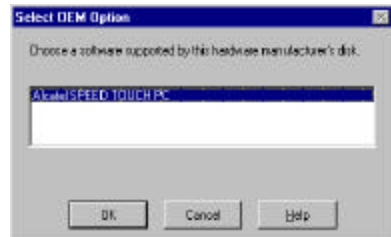
## Windows NT4.0

### RFC 2364 – Point to Point Protocol over ATM

1. On your desktop, double-click **My Computer**, and then double-click **Control Panel**.
2. In the **Control Panel** window, double-click the **Network** icon. The **Network** window appears. Select the **Adapters** tab and then click **Add**.
3. The **Select Network Adapter** window appears. Click **Have Disk**.
4. Insert the **ADSL Driver** CD-ROM into your systems CD drive.
5. The **Insert Disk** window appears. Click **Browse** to locate the driver on your CD-ROM for the protocol supported by your ADSL provider: **2364NT4** (The example uses “d” as the CD-ROM drive letter. Your drive may have a different letter.)
6. The **Select OEM Option** window will find **Alcatel Speed Touch PC**. Click OK.



C

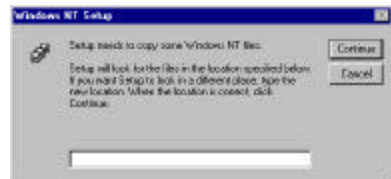


lick **OK**.

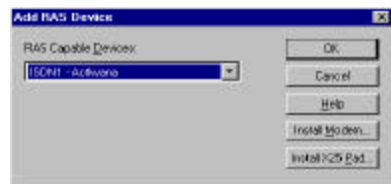
7. The **Setup Message** window appears. Click **OK**.



8. The **Windows NT Setup** window appears. Insert your NT4.0 CD-ROM into the PC system CD drive, and type in "D:\i386" Click **Continue**.



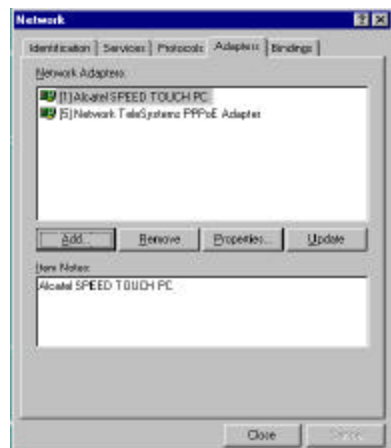
9. The **Add RAS Device** window appears. Click on the "Scroll arrow" to locate **IDSN1-Actlwana**. Then Click **OK**



10. The **Remote Access Setup** window appears. Click **Continue**.



11. The **Network** window will appear. Click the **Adapters** tab to verify that **Alcatel Speed Touch PC** has been found. Click on the **Protocols** tab and verify that the **ADSL Management and Monitor Interface** is present. Then click **Close**.



**NOTE:** To review the **Network** window properties at any time, right-click the **Network Neighborhood** icon and select **Properties**.

**NOTE:** If no previous network devices have been installed, then the **Network Neighborhood** icon will not be present on your desktop. To open the **Network** window, double-click **My Computer**, then **Control Panel**,

12. The **Network Settings Change** window appears. You must now re-start your computer for the settings to take effect. Click **Yes**.



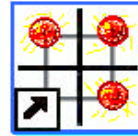
13. You must now create a Dial-up Network Connection. **Go to page 31.**



## Windows NT4.0

### Creating a Dial-up Network Connection

1. Double-click on the **Alcatel Connect** icon that appears on your desktop.

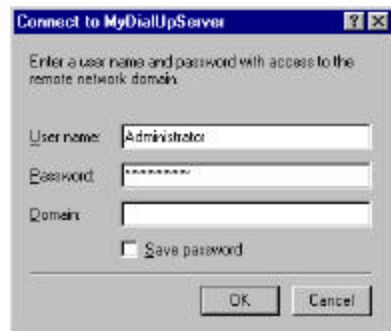


**Alcatel Connect**

2. The Dial-Up Networking window appears and prompts for the phone number of the dial-up server. Unless instructed to enter a phone number by the ADSL service provider, enter zero "0". Click Dial.



3. The **Connect to MyDialUpServer** window appears. Enter the **User name**, **Password** and **Domain** supplied by your ADSL service provider. Click **OK**.
4. **Note:** If this screen persists and a connection logon error is reported, confirm that the correct User name and Password are entered and try the connection again. Also verify that the connection address is correct.



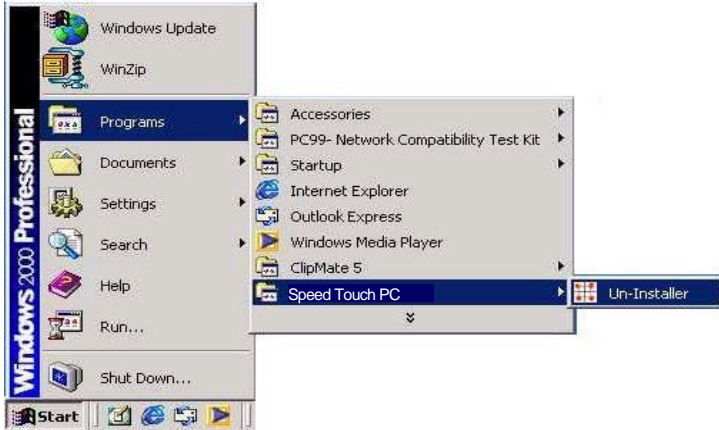
5. The **Connection Complete** window is displayed at the completion of a successful Dial-Up logon. Choose a display behavior and click **OK** to close.



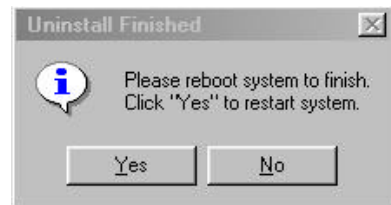
## Removing Drivers

### WINDOWS 95, W198, WINMe, WIN000, NT 4.0

1. On the desktop, click the **START** Menu on the **Task Bar**.
2. Select **Programs**. The system window appears
3. Select

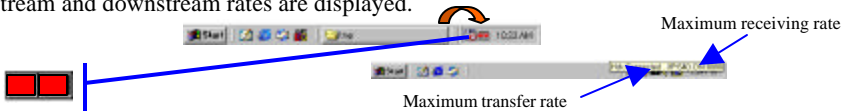


**NOTE:** For W95-98-NT4, an Uninstall Finished windows message appears.  
Click Yes to restart your system and confirm changes.










## Diagnostic Tools

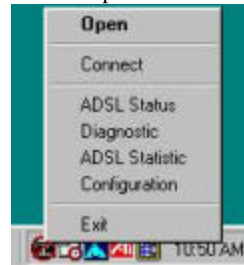
The diagnostic tool icon allows the user to monitor the ADSL connectivity, setup the service connection address, and run diagnostic tests. The Diagnostic Tools icon is displayed on the task bar as shown. By positioning the mouse cursor over the icon, the upstream and downstream rates are displayed.



The Diagnostic Tool icon consists of two lights side by side. The left light indicates data is being transmitted whereas the right light indicates data is being received. The state of the connection can be determined as follows:

Color Code	Description
 Red, Red	No ADSL connection or handshaking. Check your cable
 Black, Yellow	Handshaking. (flashing yellow alternating position)
 Black, Black	No data traffic or idle connection
 Black, Green	Modem card is receiving data (TX/off, RX/on)
 Green, Black	Modem card is transmitting data (TX/on, RX/off)
 Green, Green	Modem card is transmitting and receiving data. (TX/on, RX/on)
	ADSL modem card is disconnected or a driver problem exists.

On the **Diagnostic Tool** icon, located on the right hand side of the status bar, right-click the icon to display the menu, then click **Open**. The **ADSL Diagnostic Tool** window appears on your desktop. The three tabs of the Diagnostic Tools are **ADSL Status**, **Diagnostic**, and **ADSL Statistics**.



**ADSL Status window** displays the current state of the ADSL connection, including the current ADSL State, ADSL protocol in use, and the Net Data Rates for upstream and downstream data.

**NOTE:** ADSL protocols supported by the ADSL drivers are T1.413, G.dmt and G.lite. The protocol must be supported also by the ADSL equipment located at the central office.



**ADSL Statistic window** keeps tabs on errors that might affect overall system performance. The counts are reset whenever the PC system is restarted.

**Re-training Count** tracks the number of ADSL connections performed. Due to unexpected line condition changes, the drivers can re-train the connection causing the **Re-training Count** total to increment. The Diagnostic Tool icon will flash yellow while reconnecting.

**ADSL** implements Reed Solomon (RS) error checking:

**FEC Count** tracks the forward error correction count.

**CRC Count** tracks the accuracy of correcting data errors over each 17msec.

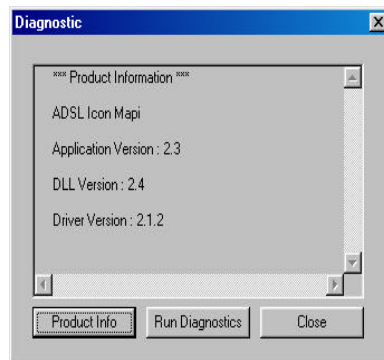
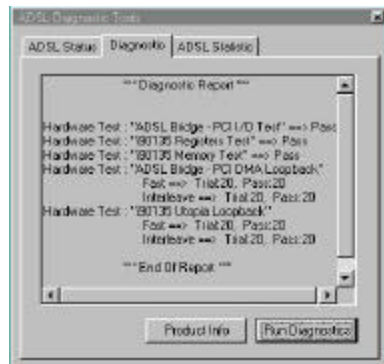
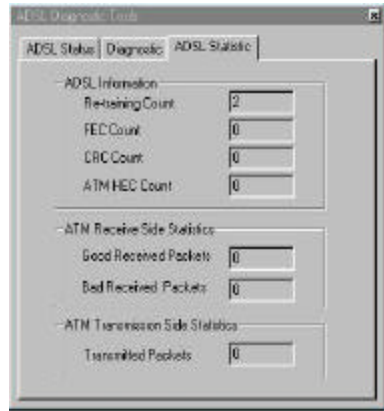
**ATM HEC Count** (header error check) errors are recorded as an indication of ATM packet accuracy.

As a measure of packet transfer performance, the **Packet Errors** are counted and tracked against the total number of **Packets Received**.

Click **Run Diagnostics** to run the **diagnostic program** that will test PC functionality and report the status. A warning message pops up that the ADSL service will disconnect before performing the diagnostic test. If connected to the Internet at this time, disconnect any Dial-up sessions. Click **Yes** to begin the **diagnostic program** or click **No** to exit **diagnostic program**. The **diagnostic program** performs a brief hardware check and displays the hardware status.

The **Diagnostic window** is used to verify the ADSL modem card functionality. Running the **Diagnostic** program will disconnect the NIC from the ADSL line. Close all Dial-up sessions and close all files before running the Diagnostic program. Product Information (e.g. driver revisions) is displayed by clicking the **Product Info** tab.

**Product Information** lists the versions of the Alcatel Speed Touch PC



## Trouble Shooting

- ☞ **Always unplug the power cord from the PC before installing the ADSL modem card!**
- ☞ **Power down mode does not turn off the power to the PCI card slot – you must turn off and unplug the power cord from the PC before installing the ADSL modem card!**

### **If there is no Diagnostic icon on the taskbar**

1. **Restart** the PC system.
2. If your system's OS is Windows 95, you must up-grade the DUN to version 1.3. The Dun up-grade is contained on the installation CD-ROM.
3. Un-install the drivers using the utility described in the appendix of the installation manual.
4. Re-install the drivers. Make sure you are selecting the correct driver for the Operating system used

### **If there are two Diagnostic icons on the taskbar**

1. You have inadvertently installed two drivers. Run the Un-install utility

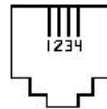
### **Is the NIC achieving ADSL connection?**

1. If the Line is connected, the modem should already be connected to the TelCo after the driver has installed successfully.
2. If the Diagnostic Icon flashing Black/Yellow but never connects:
  - The ADSL line is installed Pin assignment may be wrong – Pin 2&3 vs 1&4
  - Check with your ISP or TelCo for the physical wire connection
  - You may have a bad connection on the telephone jacks
  - You may have a bad telephone cord
  - There may be some problem on the analog circuit of the modem.
  - Visually check whether there is any obvious component problem or other damage on the ADSL circuit board.
3. If the Diagnostic Icon never flashing Black/Yellow, but always stays on Red:
  - Check whether the ADSL line is properly connected between the telephone jack on the back of the Modem Card and the telephone jack from the TelCO.
  - Using the ADSL Diagnostic Icon to run the Diagnostic software
    - If all the 5 test passed, the digital circuit is OK. The problem may come from the Analog Circuit
    - If any of the 5 test failed, the digital circuit is defective.
    - Return the PCB.
4. If the Diagnostic Icon shows hardware defective:
  - Return the PCB.
5. If the modem successfully connected to the TelCO but repeatedly starts to reconnect in a very short time.
  - The ADSL line may be too close to outside “noise” (radio frequency) interference.
  - You may have a bad component – Return the PCB.

## Connector Pin-out

---

The ADSL modem card is equipped with a RJ-11 jack for connection to the ADSL data port. The center two pins, pins 2 and 3, are used for ADSL data. For the card to make a proper ADSL connection, the installed ADSL data port should also use pins 2 and 3 for data. If the ADSL data port installation uses pins 1 and 4 for data, then a wiring converter will be required. Do not alter or remove the wiring converter if present. Consult with your ADSL provider before attempting any wiring changes.



## System Requirements & Compliance Certification

---

### System Requirements

- ▶ □ IBM PC/AT or compatible
- ▶ □ Pentium 100Mhz or faster
- ▶ □ 30Mbytes or more available hard disk space
- ▶ □ 2x CD-ROM drive or better
- ▶ □ 32Mbyte or more available system memory

### Power Requirements

- ▶ □ 0.75A Max @ +5V  $\pm$  5%, 0.1A max @  $\pm$  12V,  $\pm$  5%

### Environmental Requirements

- ▶ Operating Temperature: 0 °C to 70°C with airflow
- ▶ Non-operating Temperature: -10 °C to 85 °C
- ▶ Operating Humidity: 10% to 90% non-condensing
- ▶ Non-operating storage humidity: 5% to 95% non-condensing

### Compliance Certification

- ▶ □ UL 1950
- ▶ □ CE approved
- ▶ □ FCC Part 15 Class B

## Copyright & Regulatory Information

---

### Driver software and manual Copyright Ó 2000, Integrated Telecom Express, Inc.

This manual and software described in it are copyrighted with all rights reserved. This manual may not be copied, in whole or in part, without written consent. All product names are trademarks and or registered trademarks of their respective companies.

### FCC Statement

This equipment has been tested and found to comply with the limits for a Class B digital device, pursuant to Part 15 of the FCC Rules. These limits are designed to provide reasonable protection against harmful interference in a residential installation. This equipment generates, uses and can radiate radio frequency energy and, if not installed and used in accordance with the instructions, may cause harmful interference to radio communications. However, there is no guarantee that interference will not occur in a particular installation. If this equipment does cause harmful interference to radio or television reception, which can be determined by turning the equipment off and on, the user is encouraged to try to correct the interference by one or more of the following measure:

- ⇒ Reorient or relocated the receiving antenna.
- ⇒ Increase the separation between the equipment and receiver.
- ⇒ Connect the equipment into a different outlet circuit from than the receiver.
- ⇒ Consult an experienced radio/TV technician for help.

⇒ Shielded cables must be used to comply with FCC r



Francis Wellensplein 1 • B-2018 Antwerpen



Tel. +32 3 240 40 11 • Fax +32 3 240 99 99

**[www.alcateldsl.com](http://www.alcateldsl.com)**