



ADSL Modem

with USB and 10/100M LAN Port
(Router built-in)



Quick Start Guide

Package Contents

1. One ADSL Modem
2. One power adapter
3. One CD containing the driver and on-line manual
4. One RJ-11 ADSL/telephone cable
5. One CAT-5 crossover LAN cable
6. One USB cable
7. This Quick Start Guide

The Front Panel LEDs



LED		Meaning
1	PWR	Lit green when power adapter is connected.
2	SYS	When lit, it indicates that the device is working properly.
3	USB	When this LED is lit, it indicates that the USB port is connected to the PC and working properly.
4	LNK	Lit green when the LAN link is connected.
5	COL	Flashes green when collision happens
7	ADSL	When lit, it indicates that the ADSL (Line) port is connected to the DSLAM and working properly.

The Rear Ports

- LINE (RJ-11 connector)** Connect the supplied RJ-11 cable to this port when connecting to the ADSL
- USB (USB connector)** Connect the supplied USB cable to this port when connecting to the PC.
- Reset** Press it to restore the factory default setting back
- LAN (RJ-45 connector)** Connect the supplied crossover cable to this port when connecting to a NIC (Network Interface card) in PC.
Connect an UTP Ethernet cable to this port when connecting to a LAN such as an office or home network.
- Power (jack)** Connect the supplied power adapter to this jack.



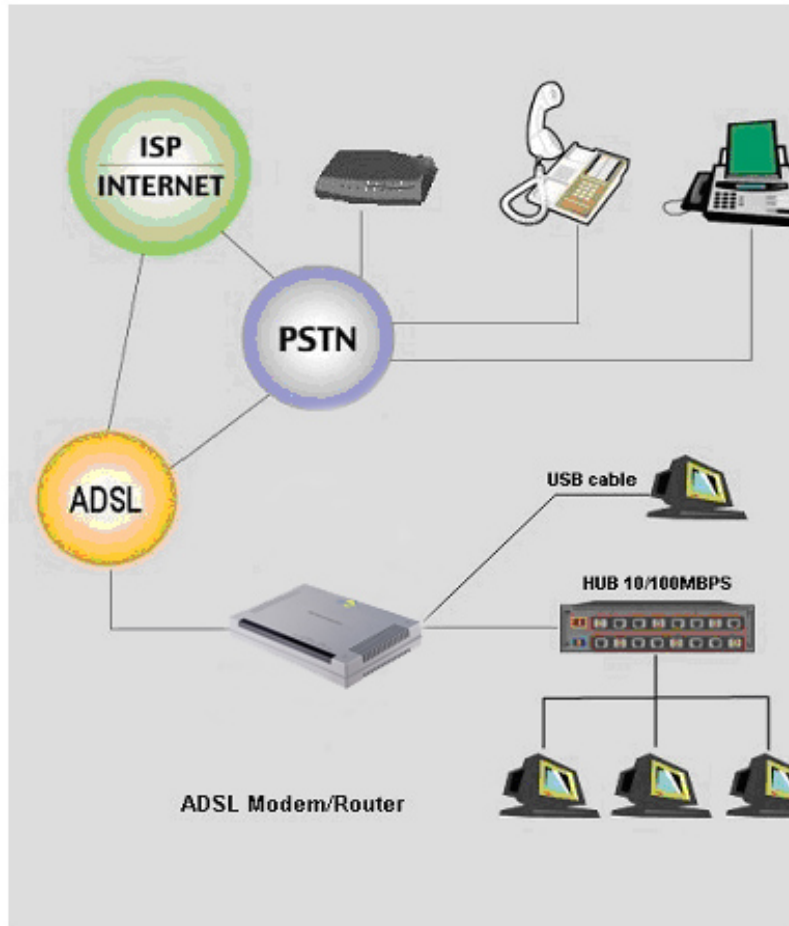
Connecting the ADSL Modem

Through Ethernet Port

1. Connect the device to a LAN (Local Area Network). Also connect it to the ADSL/telephone network.
2. Power on the device.
3. Ensure the Power and LAN LEDs are lit.
4. Follow the “*Configuring the Network Properties on a PC*” section on page 8 to modify the network settings.

Through USB Port

1. Connect the USB cable to the USB port of the device and connect the other end to the PC. Also connect the device to the ADSL/telephone network.
2. Power on the device.
3. Ensure the Power and LAN LEDs are lit.
4. Follow the “*Installing the USB Driver on a PC*” section on page 4 to setup this device.



Installing the USB Driver on a PC

If you connect the device through USB port instead of Ethernet port, for the first time the USB cable is connected to the PC, Windows will automatically detect the device. Follow the steps to install the USB driver.

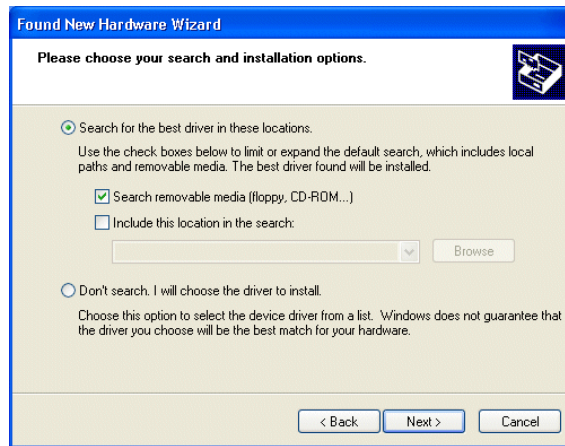


This section is described based on Windows XP. For other Operating Systems such as Windows 2000/Me/98, please refer to the on-line manual for more detailed instructions.

1. When Windows tells you that the new device has been detected, select “Install from a list or specific location” and click “Next >”.



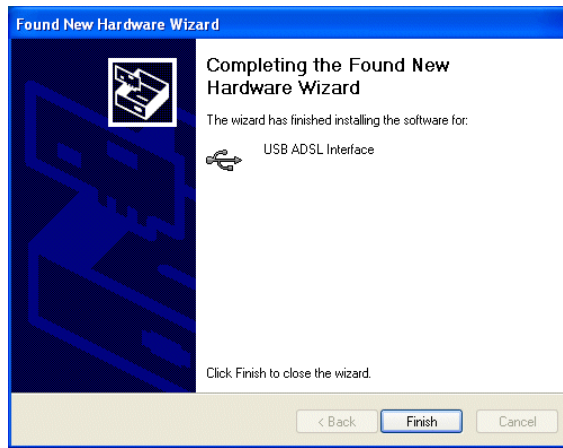
2. Insert the installation CD into the CD-ROM drive. Check “Search removable media” and click “Next >”. Then, it takes seconds to search and install the software.



3. When windows titled "Hardware Installation" or "Software Installation" appear, press "Continue Anyway" to go on.



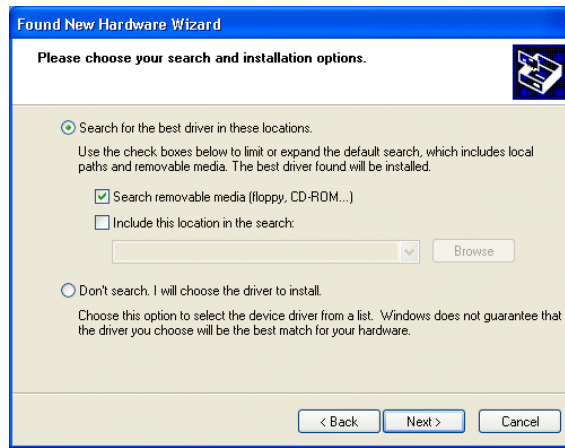
4. Then, click "Finish".



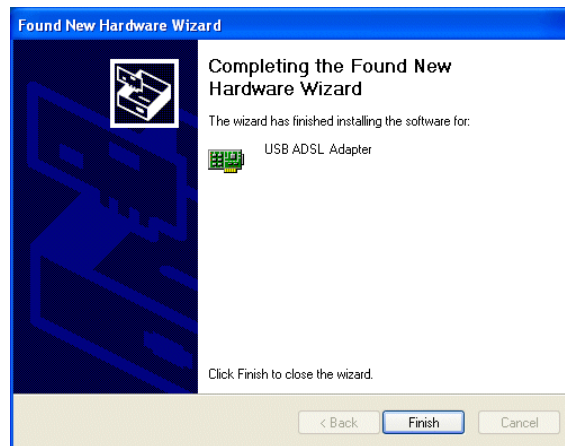
5. After a few moments, Windows will show the new device, USB ADSL Adapter, has been detected. Select "Install from a list or specific location". Click "Next >".



6. Click "Next >" when the following figure appears.



7. When windows titled "Hardware Installation" appears, press "Continue Anyway". Then, click "Finish" to end installation.

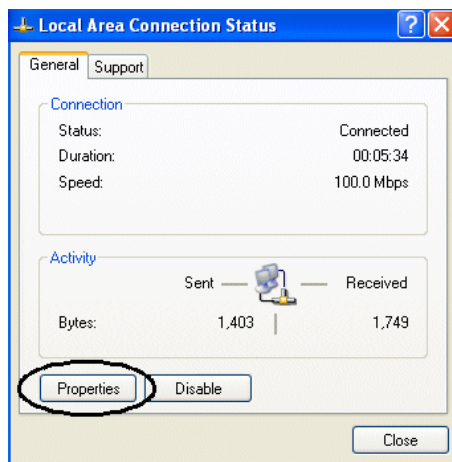
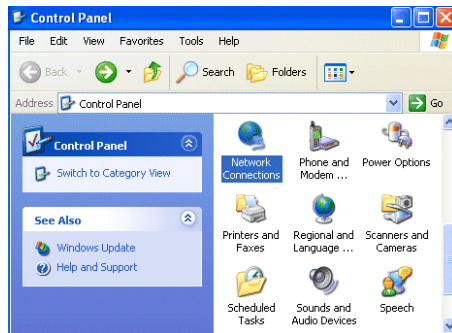


8. After installing the driver, follow the next section to configure the network properties on your PC.

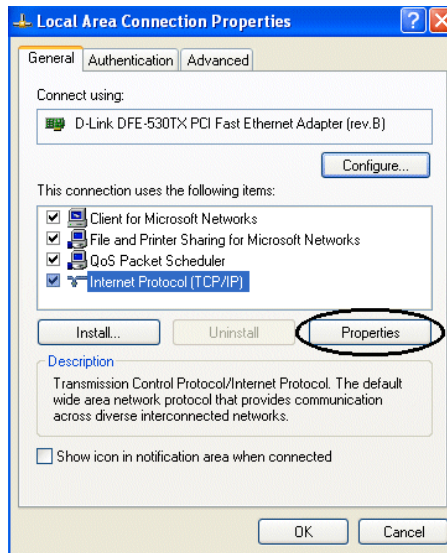
Configuring the Network Properties on a PC

For Windows XP

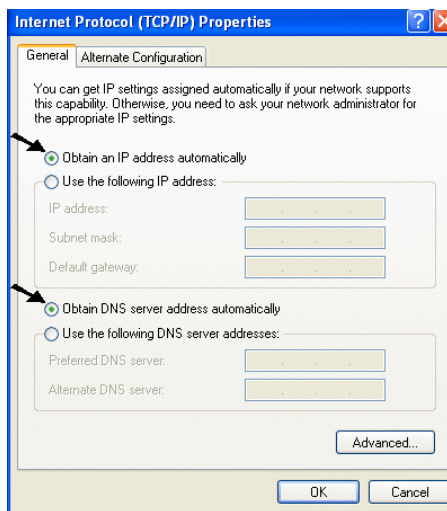
1. Go to **Start / Control Panel (in Classic View)**. In the Control Panel, double-click on **Network Connections**.
2. Double-click **Local Area Connection**.
3. In the **Local Area Connection Status** window, click **Properties**.



4. Select **Internet Protocol (TCP/IP)** and click **Properties**.



5. Select the **Obtain an IP address automatically** and the **Obtain DNS server address automatically** radio buttons.
6. Click **OK** to finish the configuration.

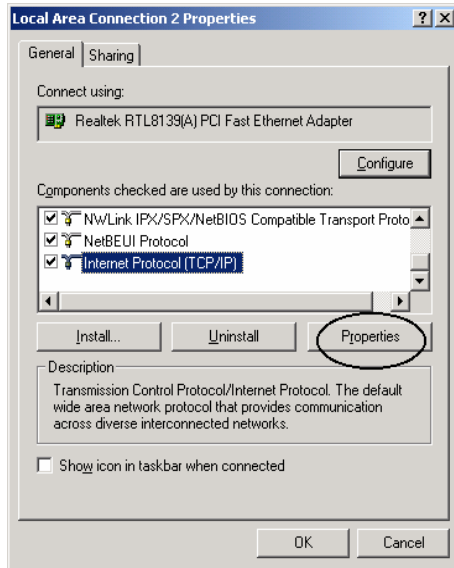


For Windows 2000

1. Go to **Start / Settings / Control Panel**. In the Control Panel, double-click on **Network and Dial-up Connections**.
2. Double-click **Local Area Connection**.
3. In the **Local Area Connection Status** window, click **Properties**.



4. Select **Internet Protocol (TCP/IP)** and click **Properties**.

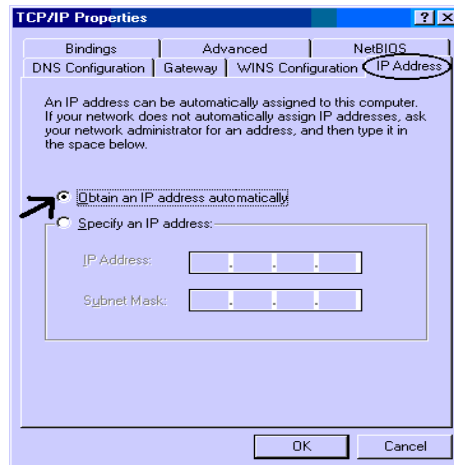
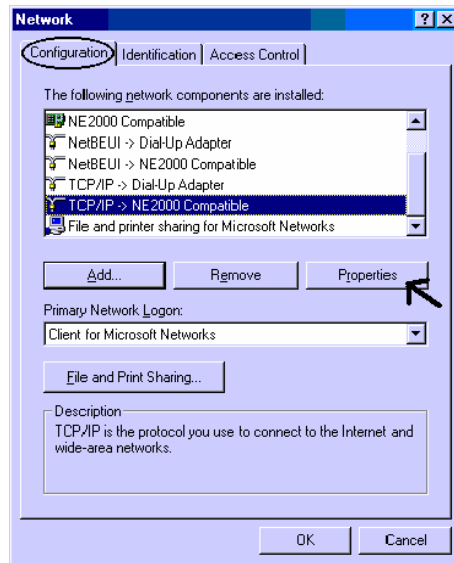


5. Select the **Obtain an IP address automatically** and the **Obtain DNS server address automatically** radio buttons.
6. Click **OK** to finish the configuration.

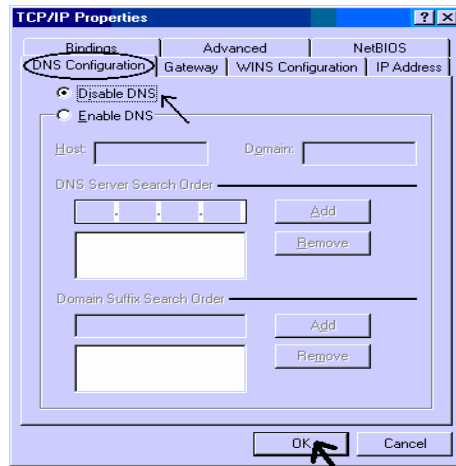


For Windows 95/98/Me

1. Go to **Start / Settings / Control Panel**. In the Control Panel, double-click on **Network** and choose the **Configuration** tab.
2. Select **TCP/IP -> NE2000 Compatible**, or any Network Interface Card (NIC) in your PC.
3. Select the **Obtain an IP address automatically** radio button.

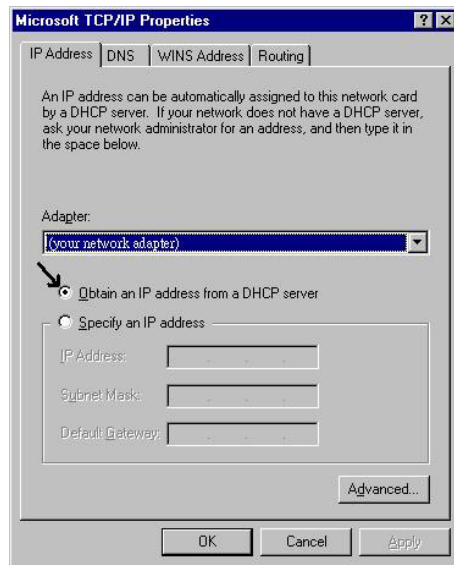


4. Then select the **DNS Configuration** tab.
5. Select the **Disable DNS** radio button and click **OK** to finish the configuration.



For Windows NT4.0

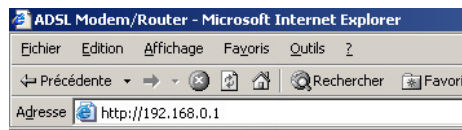
1. Go to **Start / Settings / Control Panel**. In the Control Panel, double-click on **Network** and choose the **Protocols** tab.
2. Select **TCP/IP Protocol** and click **Properties**.
3. Select the **Obtain an IP address from a DHCP server** radio button and click **OK**.



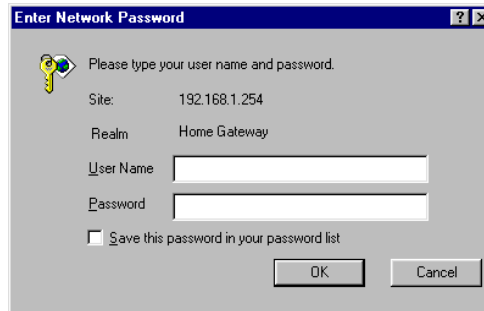
Configuring the ADSL Modem

NOTE: To configure this device, you must have IE 5.0 / Netscape 4.5 or above installed.

1. Open web browser and type <http://192.168.0.1> in the browser's address box. This number is the default IP address for this device. Press **Enter**.



2. A user name and password prompt will appear. There is two-level password protection. The first level is for administrator. The username is **admin** and password is **password**. The second level is for user. The username is **user** and the password is **password**. Please modify these passwords for security reason.



Open your Web browser to begin surfing the Internet.

NOTE: For more detailed instructions on configuring and using the product, please refer to the on-line manual.