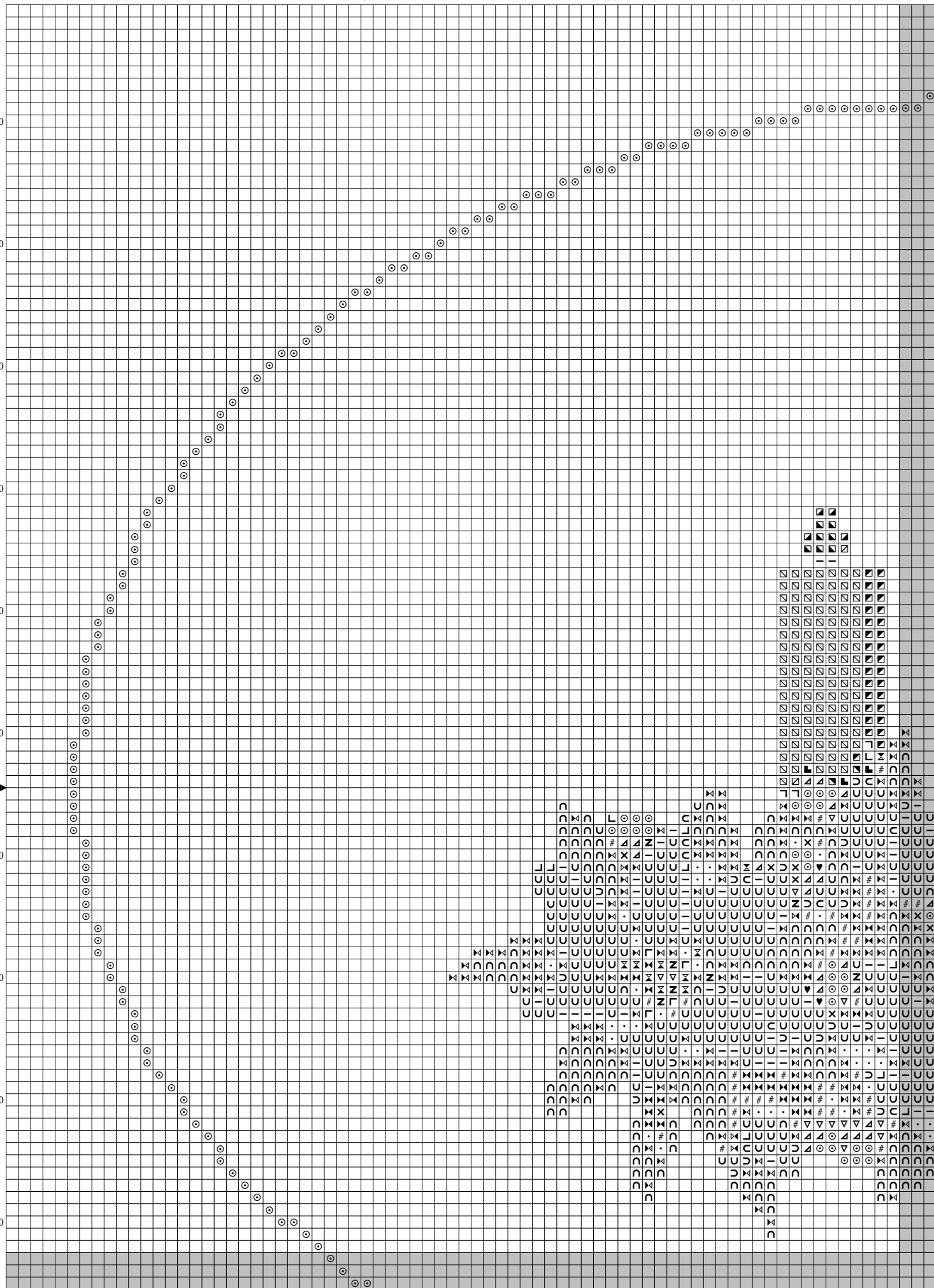


10 20 30 40 50 60 70

10
20
30
40
50
60
70
80
90
100



80

90

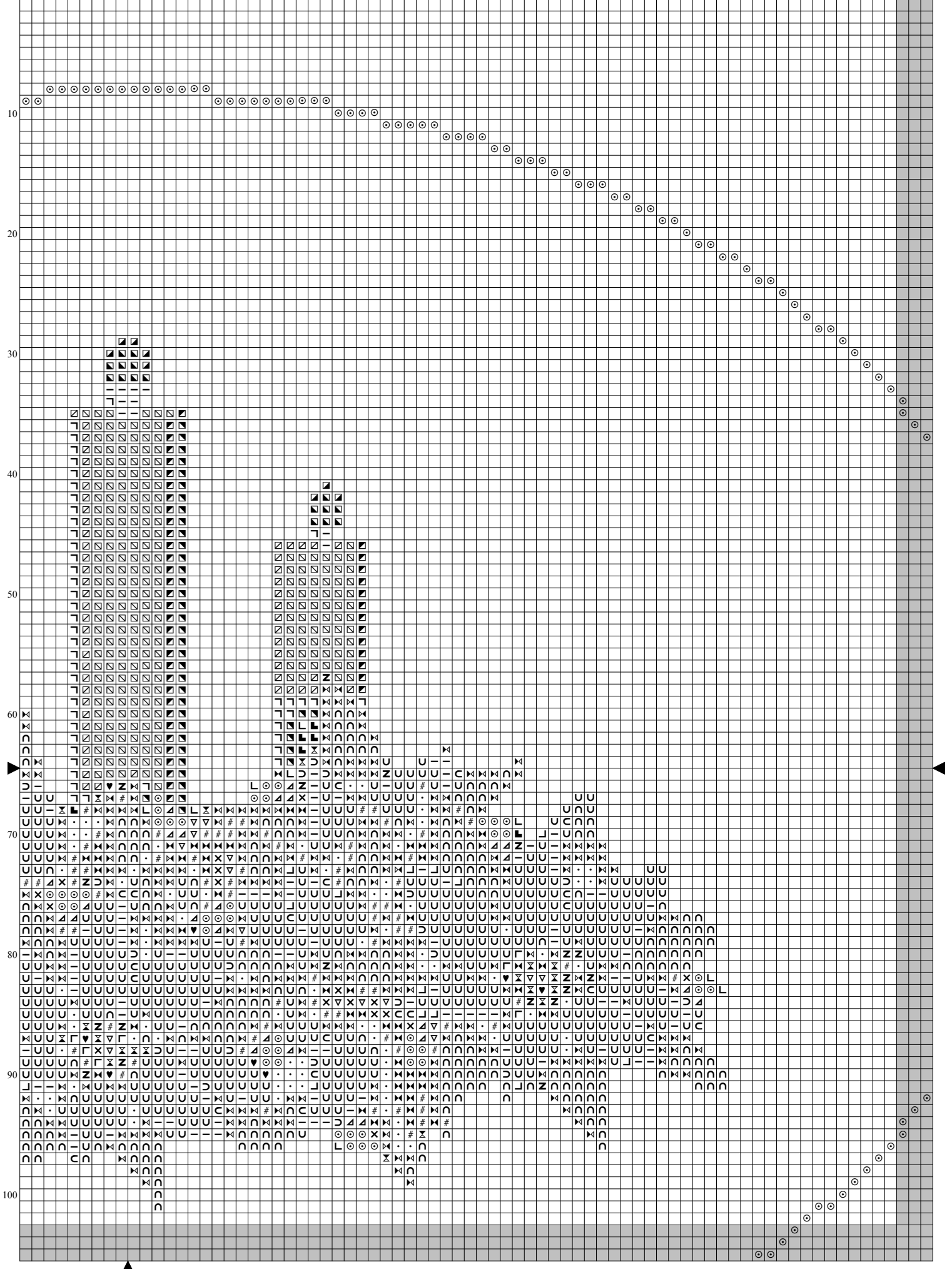
100

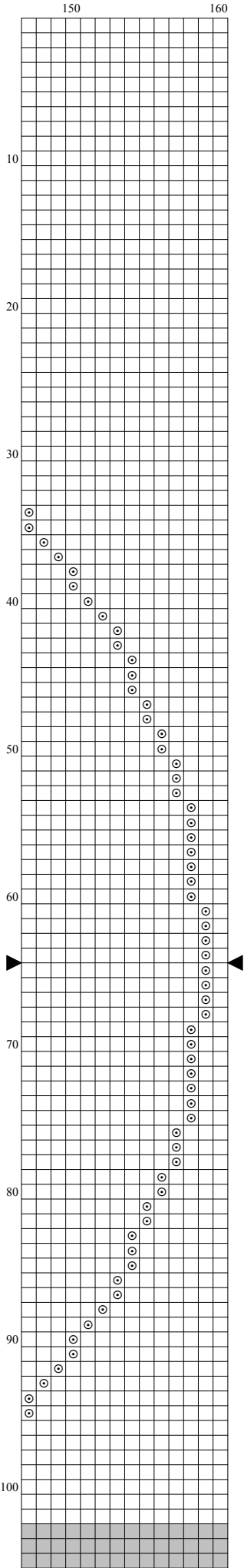
110

120

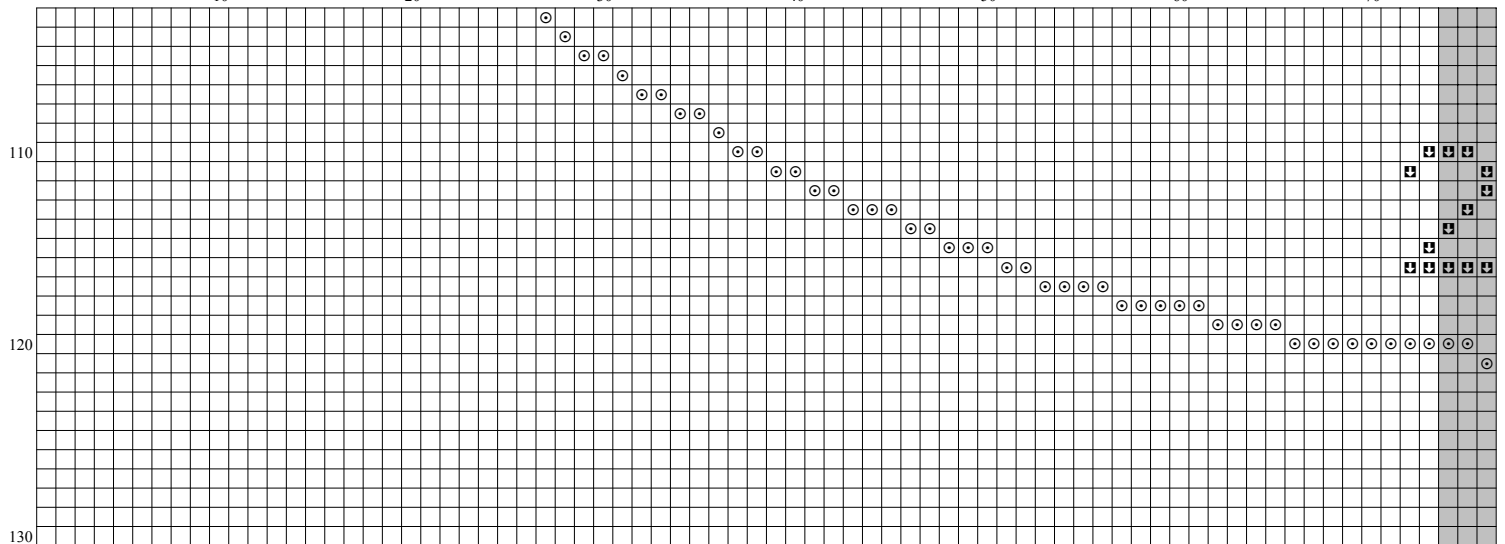
130

140





10 20 30 40 50 60 70



80

90

100

110

120

130

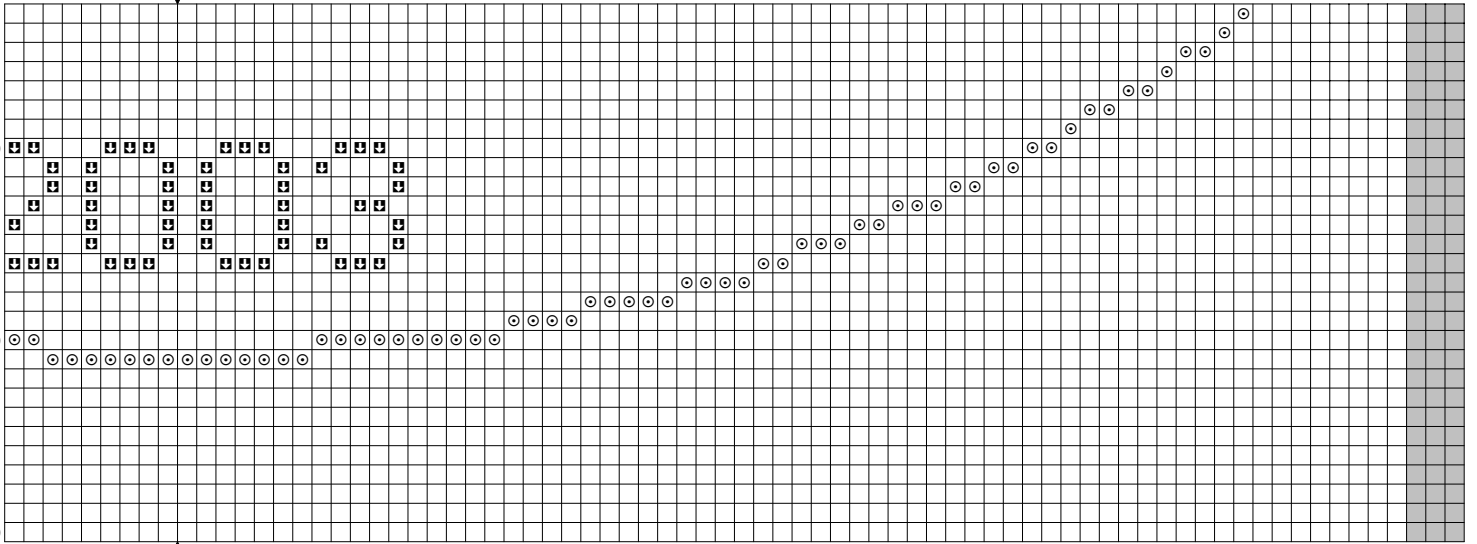
140



110

120

130



MTV Designs



Cross stitch charts

Instructions and Symbol Key for Design "Candle 2003"

Fabric: 14 count white Aida

Stitches: 154 x 114 **Size:** 11.00 x 8.14 inches or 27.94 x 20.68 cm

Colours: DMC

Use 2 strands of thread for cross stitch

Sym	No.	Colour Name	Sym	No.	Colour Name
■	642	Beige grey - dk	▽	310	Black
▲	890	Pistac. gm - ultra drk	✕	3371	Black brown
◎	3818	Emerald green - vy dk	✕	814	Garnet - dk
♥	3857	3857	#	815	Garnet - med
•	498	Xmas red - dk	■	3777	Terra cotta - vy dk
✕	3772	Flesh - dk	■	832	Golden olive
✕	816	Garnet	■	817	Coral red - vy dk
U	321	Xmas red	■	666	Xmas red - bright
I	349	Coral - dk	■	900	Burnt orange - dk
I	606	Bright orange - red	■	3801	Xmas red - lt
■	3033	Mocha brown - lt	■	166	Lime Green
■	524	Fern green - vy lt	■	973	Canary - bright
■	445	Lemon - lt	■	3024	Brown grey - vy lt
■	3072	Beaver grey - vy lt	■	822	Beige grey - lt
■	ECRUT	ECRUT	■	002	Gold

This chart has been designed and printed with our best intentions of being without mistakes. However, the possibility of human error, printing mistakes or the variation of individual stitching does exist, and we regret that we cannot be responsible for this.

Note: The shaded blocks on the chart represent overlapping stitches.

Copyright © Maria Teresa Vitali 2003 All rights reserved.