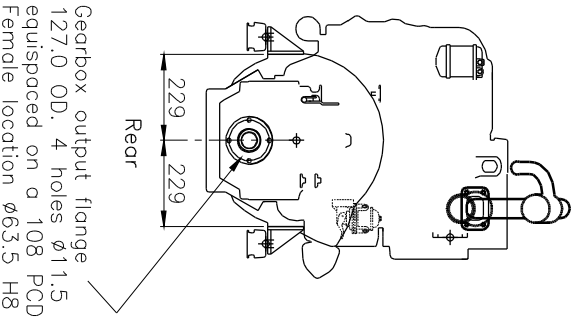
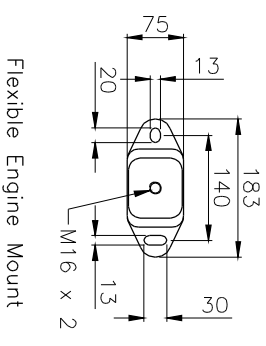
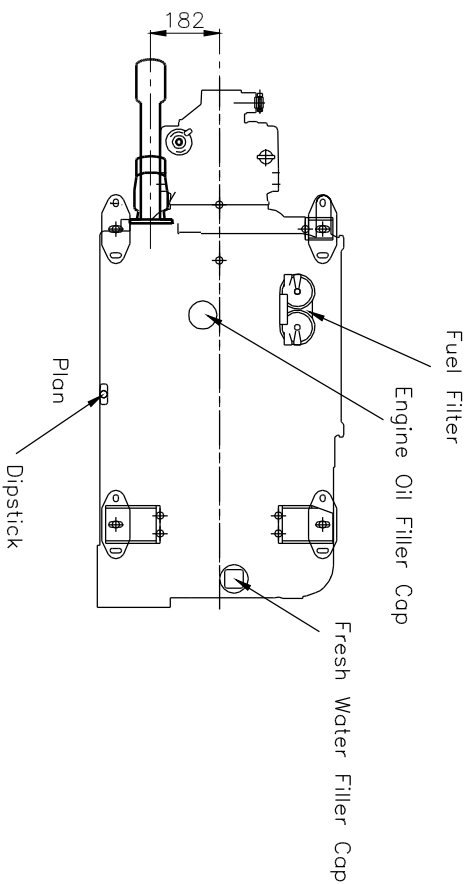
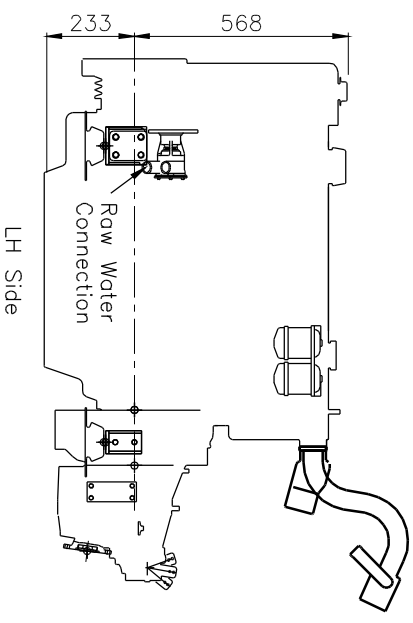
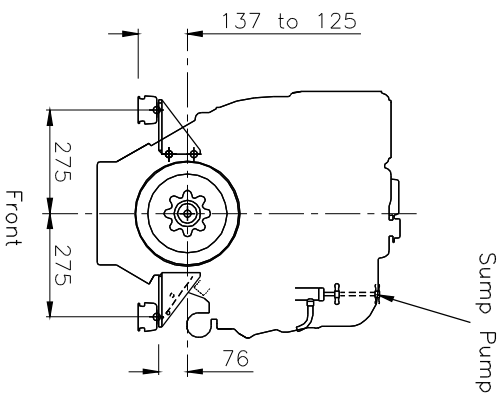
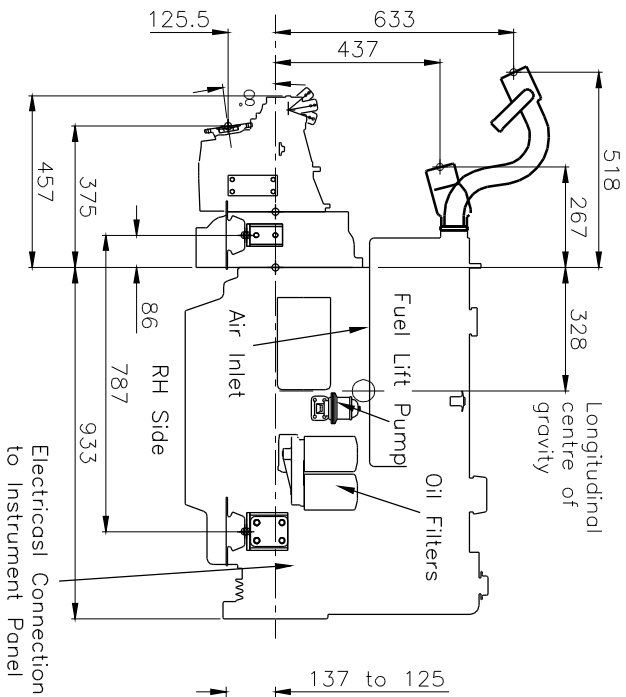


Perkins Sabre M130C and M135 Marine Diesel Engine  
 shown with the Hurth HSW 450A gearbox (Ratios up to and including 2:1)  
 (550mm transverse mounting centres)

SABRE ENGINES LTD  
 Wimborne, Dorset, England.  
 Tel. +44(0)1202 893720  
 Fax. +44(0)1202 851700  
 E-mail. Post@Sabre-engines.co.uk  
 www.Perkins-Sabre.com



Gearbox output flange  
 127.0 OD. 4 holes  $\phi$ 11.5  
 equispaced on a 108 PCD  
 Female location  $\phi$ 63.5 H8



Doc No. 7077-2-00