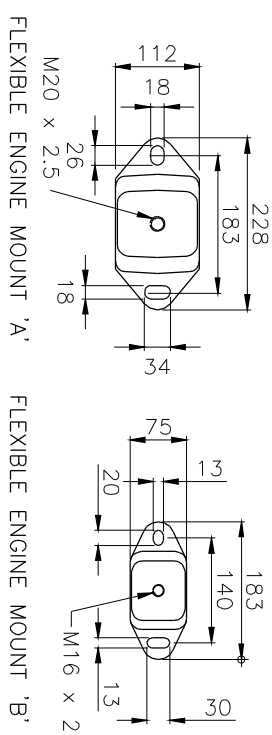
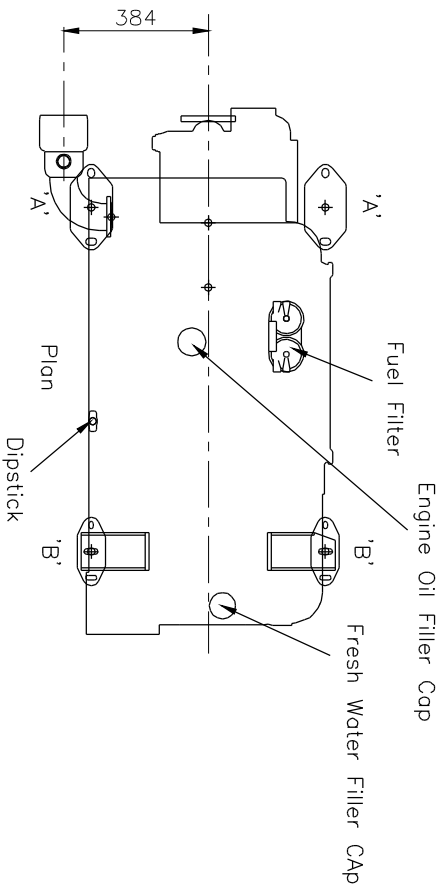
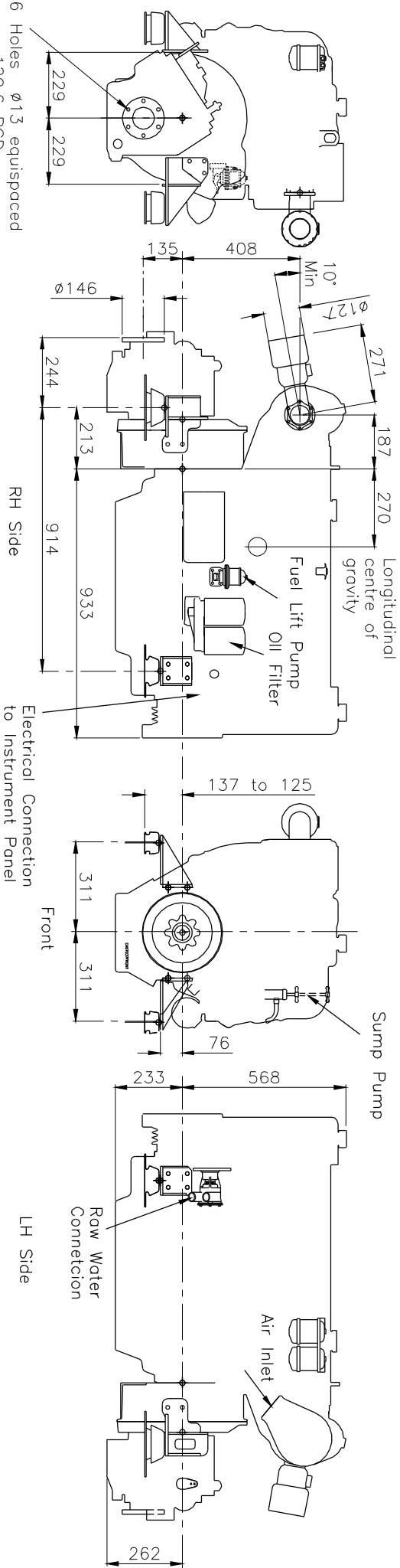


Perkins Sabre M185, M215C & M225Ti Marine Diesel Engine shown with the PRM 1000D gearbox (Ratios above 2:1) (622mm transverse mounting centres)

SABRE ENGINES LTD  
 Wimborne, Dorset, England.  
 Tel. +44(0)1202 893720  
 Fax. +44(0)1202 851700  
 E-mail: Post@Sabre-engines.co.uk  
 www.Perkins-Sabre.com



FLEXIBLE ENGINE MOUNT  
 Weights on each mount  
 Front 166.2kg  
 Rear 202.1kg  
 Total Wet Weight 736.6kg



Rear

6 Holes  $\phi 13$  equispaced on a 120.6 PCD  
 Female location  $\phi 76.23/\phi 76.26$

DOC 7029-7-00