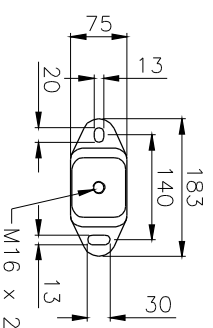
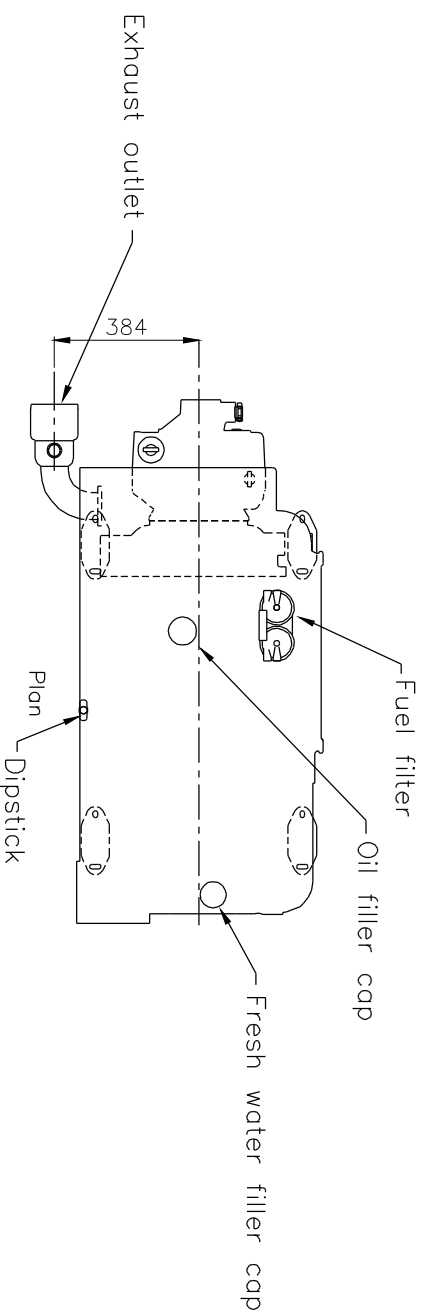


Perkins Sabre M215C and M225Ti Marine Diesel Engine shown with Hurth HSW 630A gearbox with reduction ratios up to and including 2:1 (550mm transverse mounting centres)

SABRE ENGINES LTD
 Wimborne, Dorset, England.
 Tel. +44(0)1202 893720
 Fax. +44(0)1202 851700
 E-mail. Post@Sabre-engines.co.uk
 www.Perkins-Sabre.com



FLEXIBLE ENGINE MOUNT

Weights on each mount:
 Front - 165kg per mount
 Back - 174kg per mount
 Total Wet Weight - 678kg

