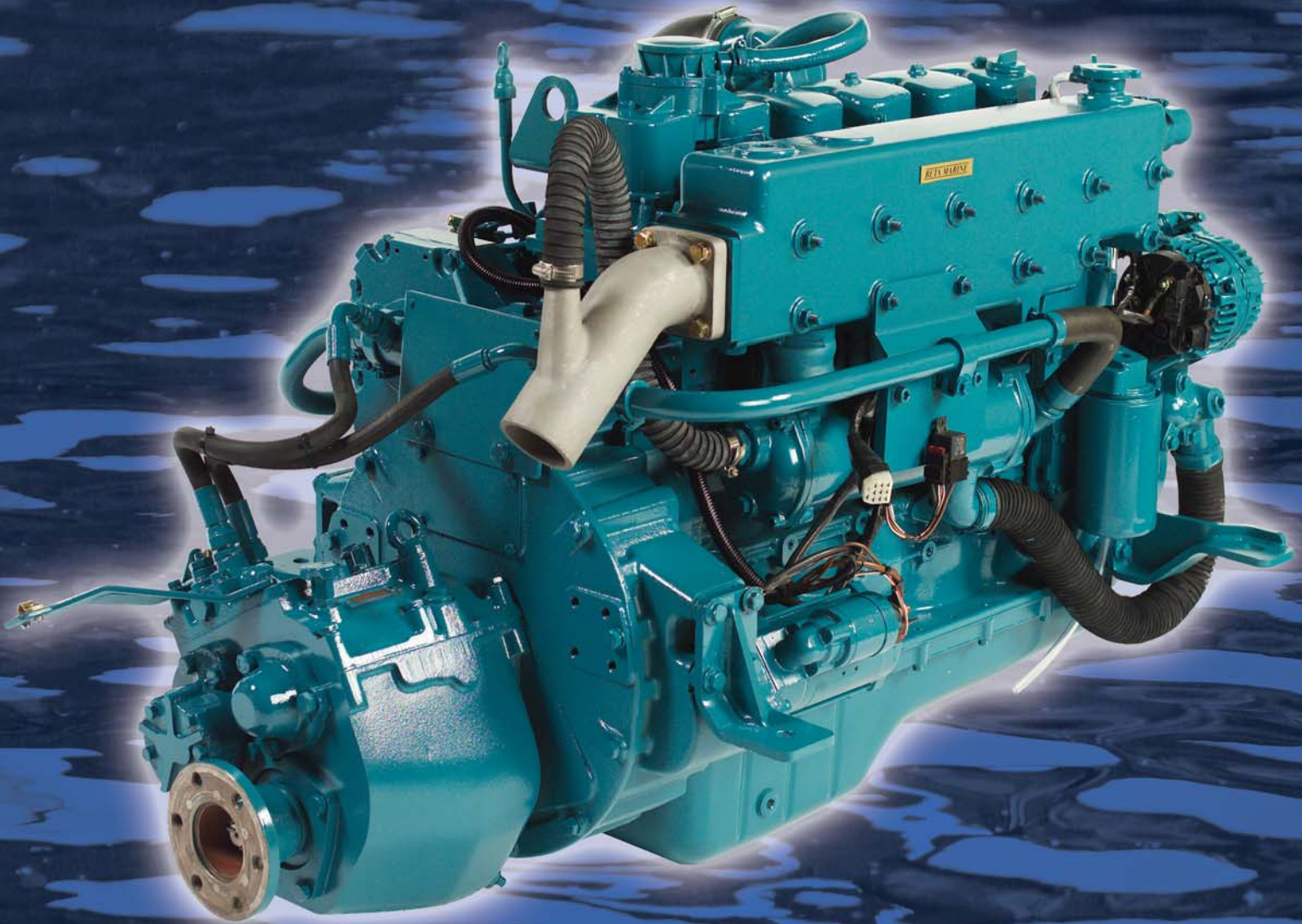


***BETA* MARINE**

Beta 120

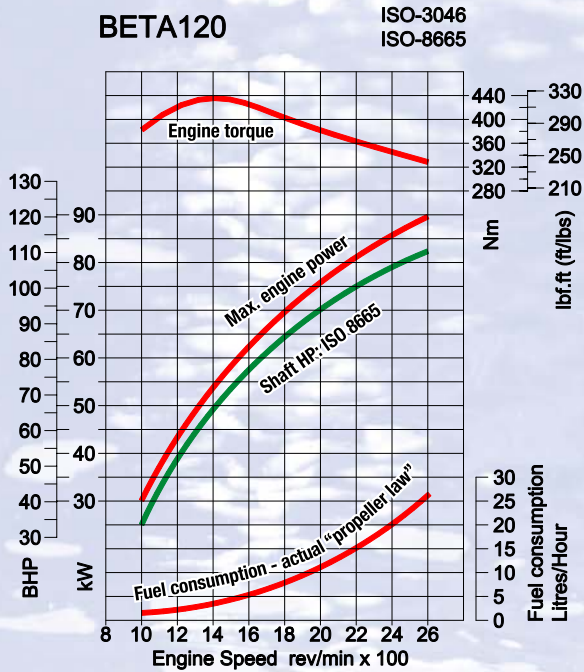


The Professional's Choice

All the power you need

Beta 120

6 Cylinders - 6.7 litre - 120bhp max at 2,600 rev/min - 670Kg

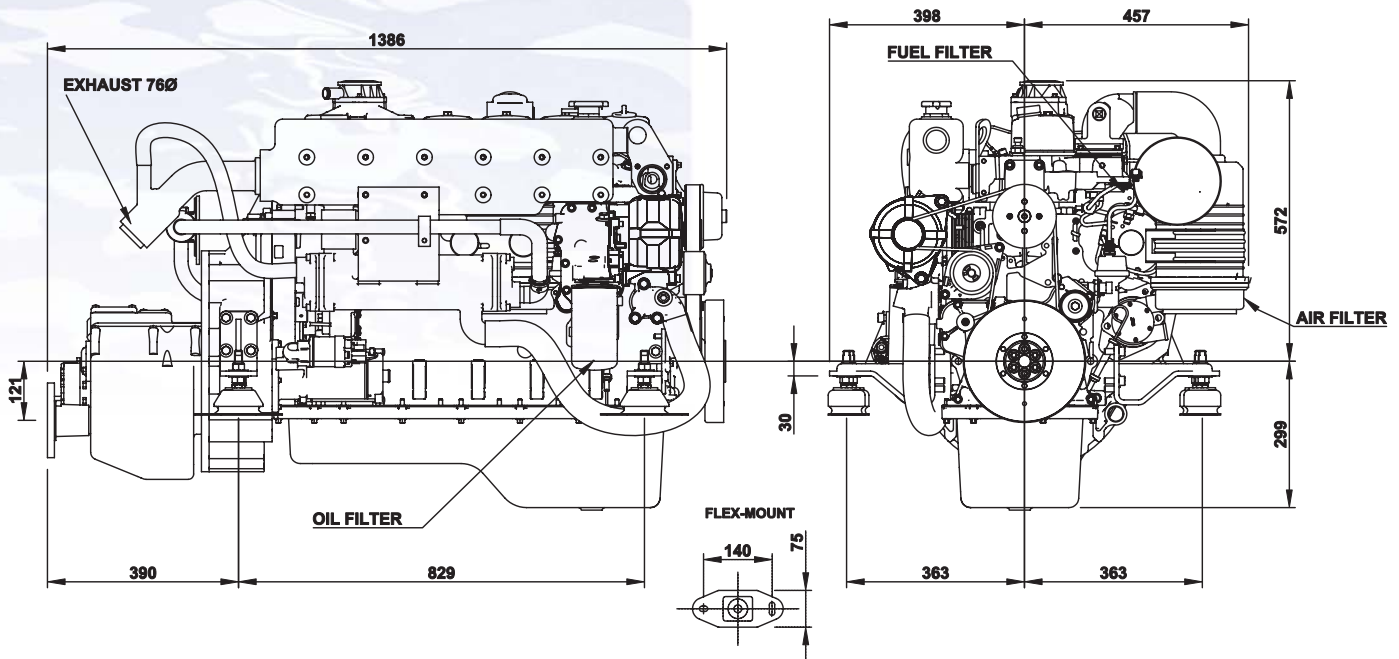


FUEL CONSUMPTION BASED ON THEORETICAL PROPELLER LOADING - MATCHED AT FULL SPEED.

Max. power at flywheel according to 97/68 EC after 50 hours running, 3% tolerance, fuel Diesel EN 590.

The Beta 120 has been specially developed for commercial Fishing Boats, Launches, Wide Beamers and Dutch Barges. It is a heavy duty - 6 cylinder - naturally aspirated - direct injection - marine propulsion diesel engine. Its outstanding asset is the slow speed / high torque of 440Nm developed at 1400 rev/min from an engine of solid construction that is not only smooth and quiet but also economic with direct injection. Conforms with all current RCD '94/25/EC as amended by 2003/44/EC' emission regulations.

Beta Marine Beta 120 is supplied complete with heat exchanger and header tank cooling, water cooled exhaust manifold, fresh and sea water pumps, injection bend, mechanical fuel lift pump, fuel and oil filters, sump pump, flywheel and flywheel housing. Engine oil cooler, air cleaner, 12 volt starter and 90 amp battery charging alternator. Control panel type "AB" with tachometer/hour recorder, keystack switch and push button stop, warning lights and alarm buzzer for low oil pressure, high water temperature and no charge, with 3 metre interconnection cable with multi pin plug and sockets to engine harness. The Beta 120 uses an IVECO block and is coupled to a PRM 500 hydraulic gearbox with nominal 2:1 reduction, heavy duty engine feet with flexible mountings, "Morse" type end fittings for speed and gear control, engine test certificate, operators manual. 'Peacock Blue' paint and packed on a skid base and fully warranted by Beta Marine.



BETA MARINE

Beta Marine Limited
Davy Way, Waterwells,
Quedgeley, Gloucestershire
GL2 2AD, United Kingdom.

Tel: +44 (0)1452 723492
Fax: +44 (0)1452 883742
Email: sales@betamarine.co.uk
www.betamarine.co.uk