

BUKH DV7 ME

Marine Diesel Engine

»Outstanding Performance and Reliability«



Designed for a rough life at sea

BUKH is synonymous with quality and reliability when it comes to diesel engines for boats. For the last 100 years, BUKH has designed rugged engines capable of withstanding the rigours of everyday life. That is why BUKH is a major supplier of lifeboat engines throughout the world.

BUKH engines are available in various sizes, ranging from 7 to 48 HP. Common to them all is that they cause no vibration, noise, unpleasant fumes or smells. They are designed for boats and built to withstand a harsh life at sea, where engine failure can have catastrophic results. That is why BUKH engines start every time.

BUKH DV7

DV7 is the smallest BUKH diesel engine. It is a single-cylinder engine producing 7 HP. Thanks to its compact design, one of the world's most reliable inboard engines can now be installed in small leisure craft.

Technical features BUKH DV7

- Single-cylinder four-stroke engine
- Watercooled with direct injection
- Electric start or very easy starting by hand cranking
- Automatic decompression
- Self-venting fuel system
- Centrifugal governor for variable or fixed speed
- Lubrication oil gear pump

Standard equipment

- Aircleaner
- Fuel pump
- Fuel filter
- Cooling water pump
- Watercooled exhaust elbow
- 12 V electrical starter motor
- Alternator in flywheel house
- Clutches
- Reduction gear
- Operating remote panel with:
 - Charging light
 - Lubricating oil pressure warning light
 - Cooling water temperature warning light
 - Key switch for start and stop
 - Audible warning
- Fittings for remote control
- Flexible engine mounts
- Hand crank
- Operating manual



AABENRAA MOTORFABRIK Heinrich Callesen A/S

Næstmark 30, PO Box 79, 6200 Aabenraa, Denmark
Tel: +45 74 62 20 88 · Fax: +45 74 62 74 07
E-mail: bukh@bukh.dk · www.bukh.dk

Aabenraa Motorfabrik is one of the world's leading producers of lifeboat engines

Aabenraa Motorfabrik is an OEM manufacturer with workshop facilities and distributors worldwide. The BUKH RME lifeboat engines comply with the SOLAS requirements and have been approved by many international and national authorities, including EU authorities.

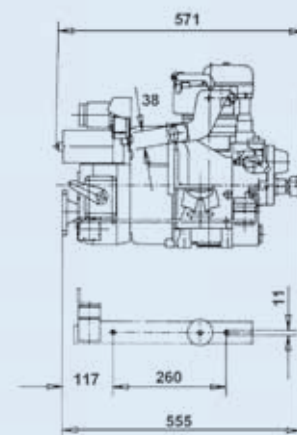
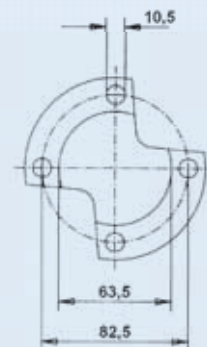
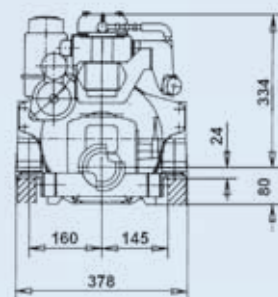
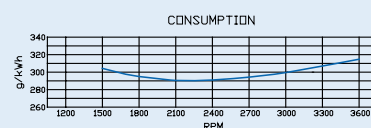
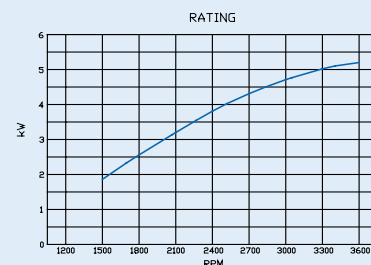
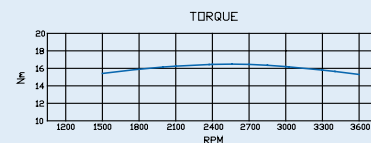
The BUKH ME engines are built to the same specifications, standards, and qualities as the BUKH RME lifeboat engines.



Max continuous rating (3600 rpm) IFN-ISO (DIN 6271)	7 HP (5,2 kW)
Reverse-reduction gear ratio	2,05 : 1
Engine rotation (looking forward)	Anti-clockwise
Propeller rotation (looking forward)	Clockwise
Number of cylinders	1
Bore and stroke	82mm x 55mm (3.23x2.17 in)
Swept volume	290 cm ³ (17.70 cu in)
Cycle	4-stroke
Cooling system	Seawater (7-8 l/min)
Inclination, max, fore and after	15°
Heel, max, continuous	27°
Fuel consumption, full load	2,0 l/h (0.52 galls/h*)
Fuel consumption, cruising	1,2 l/h (0.32 galls/h*)
Electric starter motor	12 Volt
Charging alternator in flywheel housing	12 Volt, 160 Watt
Net (dry) weight	64 kg (141 lbs)

* U.S. Gallons

DV7 ME



Your local distributor: