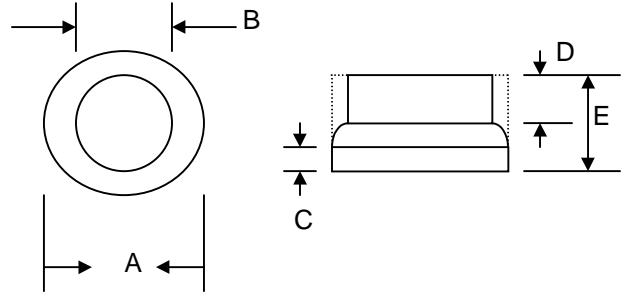


### Features

- Diffused Junction
- Low Leakage
- Low Cost
- High Surge Current Capability
- Die Size 164 mil HEX



### Mechanical Data

- Case: Protected with Silicon Rubber
- Terminal: Slug, Cu with Ag Plated
- Polarity: Indicated by Large Slug On Cathode Side
- Mounting Position: Any

C25		
Dim	Min	Max
A	—	5.46
B	—	4.82
C	0.75	—
D	1.0	—
E	—	2.2
All Dimensions in mm		

### Maximum Ratings and Electrical Characteristics @ $T_A=25^\circ\text{C}$ unless otherwise specified

Single Phase, half wave, 60Hz, resistive or inductive load.  
For capacitive load, derate current by 20%.

Characteristic	Symbol	C25A	C25B	C25D	C25G	C25J	C25K	C25M	Unit
Peak Repetitive Reverse Voltage	$V_{RRM}$	50	100	200	400	600	800	1000	V
Working Peak Reverse Voltage	$V_{RWM}$								
DC Blocking Voltage	$V_R$								
RMS Reverse Voltage	$V_{R(RMS)}$	35	70	140	280	420	560	700	V
Average Rectified Output Current @ $T_C = 150^\circ\text{C}$	$I_O$	25							A
Non-Repetitive Peak Forward Surge Current 8.3ms Single half sine-wave superimposed on rated load (JEDEC Method)	$I_{FSM}$	400							A
Forward Voltage @ $I_F = 50\text{A}$	$V_{FM}$	1.08							V
Peak Reverse Current At Rated DC Blocking Voltage @ $T_A = 25^\circ\text{C}$	$I_{RM}$	3.0							$\mu\text{A}$
Typical Thermal Resistance Junction to Ambient	$R_{\theta JA}$	26							K/W
Operating and Storage Temperature Range	$T_J, T_{STG}$	-40 to +150							$^\circ\text{C}$

\*Glass passivated forms are available upon request

**ORDERING INFORMATION**

<b>Product No.</b>	<b>Package Type</b>	<b>Shipping Quantity</b>
C25A	5.5mm Cell	10000 Units/Box
C25B	5.5mm Cell	10000 Units/Box
C25D	5.5mm Cell	10000 Units/Box
C25G	5.5mm Cell	10000 Units/Box
C25J	5.5mm Cell	10000 Units/Box
C25K	5.5mm Cell	10000 Units/Box
C25M	5.5mm Cell	10000 Units/Box

Shipping quantity given is for minimum packing quantity only. For minimum order quantity, please consult the Sales Department.