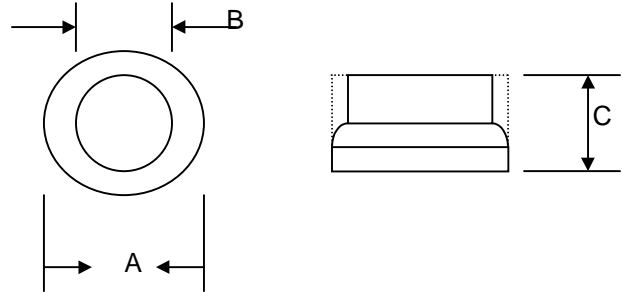


40A GLASS PASSIVATED AVALANCHE RECTIFIER CELL
Features

- Glass Passivated Die Construction
- High Power Capacity
- Avalanche Voltage 24 to 32 Volts
- High Surge Current Capability
- Die Size 220 mil HEX


Mechanical Data

- Case: Protected with Silicon Rubber
- Terminal: Slug, Cu with Ag Plated
- Polarity: Indicated by Large Slug on Cathode Side
- Mounting Position: Any

C2540		
Dim	Min	Max
A	7.23	7.30
B	6.53	6.58
C	2.15	2.25
All Dimensions in mm		

Maximum Ratings and Electrical Characteristics @ $T_A=25^\circ\text{C}$ unless otherwise specified

Single Phase, half wave, 60Hz, resistive or inductive load.
 For capacitive load, derate current by 20%.

Characteristic	Symbol	C2540	Unit
Peak Repetitive Reverse Voltage Working Peak Reverse Voltage DC Blocking Voltage	V_{RRM} V_{RWM} V_R	20	V
Average Rectified Output Current @ $T_A = 150^\circ\text{C}$	I_O	40	A
Breakdown Voltage Min. Breakdwon Voltage Max.	V_{BR}	24 32	V
Non-Repetitive Peak Forward Surge Current 8.3ms Single half sine-wave superimposed on rated load (JEDEC Method)	I_{FSM}	600	A
Peak Reverse Surge Current	I_{RSM}	150	A
Forward Voltage @ $I_F = 100\text{A}$	V_{FM}	1.05	V
Peak Reverse Current at Rated DC Blocking Voltage @ $T_C = 25^\circ\text{C}$	I_{RM}	200	nA
Typical Thermal Resistance Junction to Ambient	$R_{\theta JA}$	0.8	K/W
Operating and Storage Temperature Range	T_J, T_{STG}	-40 to +150	$^\circ\text{C}$

ORDERING INFORMATION

Product No.	Package Type	Shipping Quantity
C2540	7.23mm Cell	2000 Units/Box

Shipping quantity given is for minimum packing quantity only. For minimum order quantity, please consult the Sales Department.