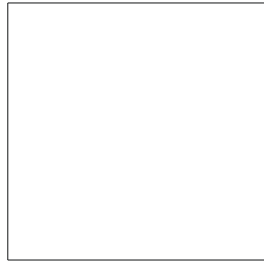
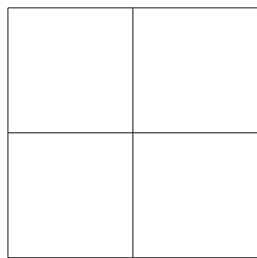


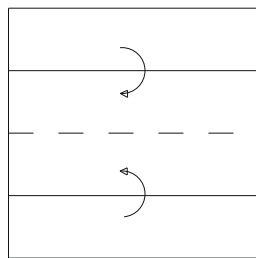
# ASINO (accovacciato)



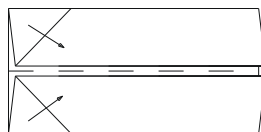
FASE 1: Si inizia sempre con un foglio quadrato



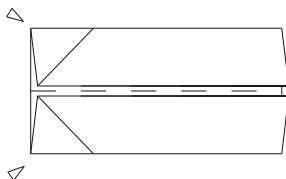
FASE 2: Piega lungo le linee mediane



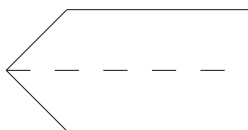
FASE 3: Ripiega lungo la linea mediana



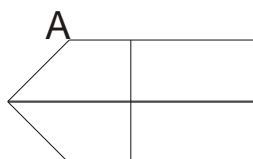
FASE 4: Piega e riapri



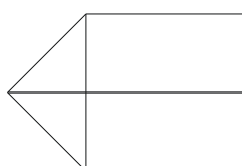
FASE 5: Piega all'interno.....



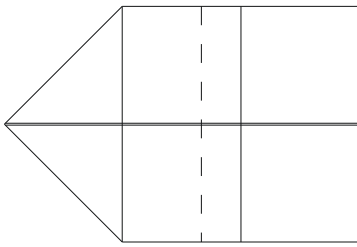
FASE 6: ed otteniamo questa figura



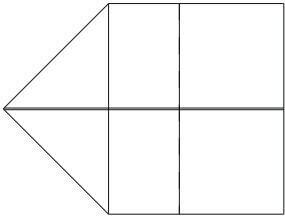
FASE 7: Sovrapponi la linea mediana ad AB ed ottieni.....



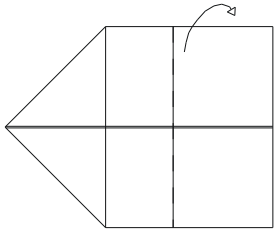
FASE 8: questa figura



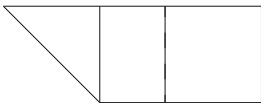
FASE 9: Sovrapponi ancora per circa 1/3



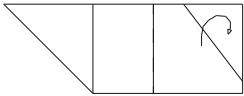
FASE 10: ed avremo ottenuto questa figura



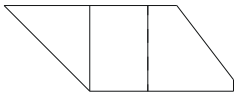
FASE 11: Rigira a metà la figura ed otterrai..



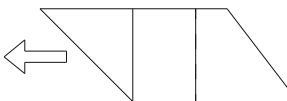
FASE 12: questa figura



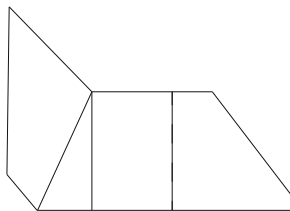
FASE 13: Piega all'interno e così formerai le zampe posteriori



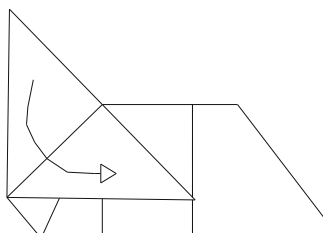
FASE 14: E questo è quello che otterrai



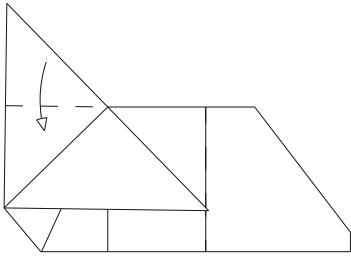
FASE 15: Ora tira verso l'esterno la parte del muso ed otterrai.....



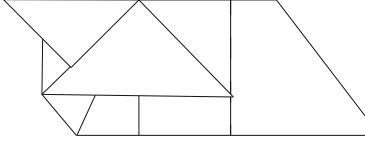
FASE 16: questa figura.



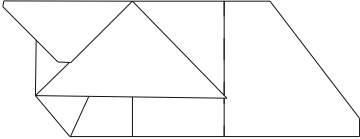
FASE 17: Piega in fuori (da ambo i lati) in modo da isolare la parte che diventerà la testa dell'asino.



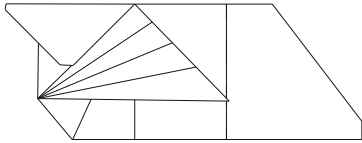
FASE 18: Piega ed otterrai.....



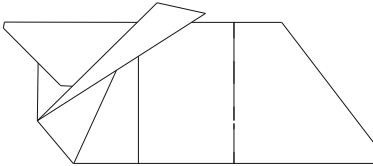
FASE 19: la testa.



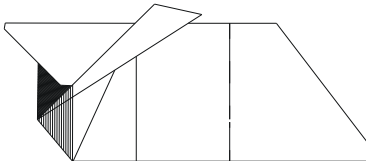
FASE 20: Smussa un pochino gli angoli della testa in modo da addolcirli.



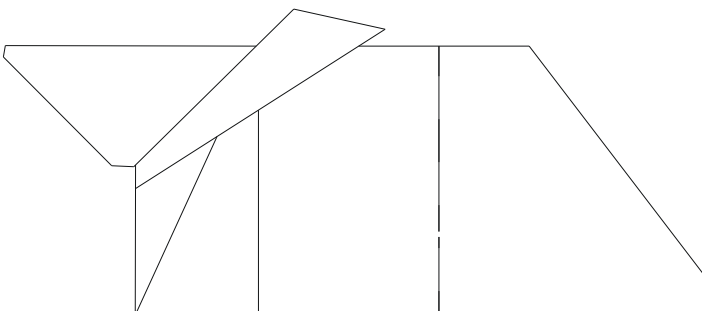
FASE 21: Ora devi formare le orecchie ripiegando 4 volte a ventaglio le parti interessate.



FASE 22: Questo è quello che otterrai.



FASE 23: Ripiega all'interno le 2 parti retinate (ti conviene fare uno zoom)



L'asino è terminato. Se vuoi puoi inclinare un pò di più la testa e puoi anche lavorare sulle zampe in modo da sagomarle.