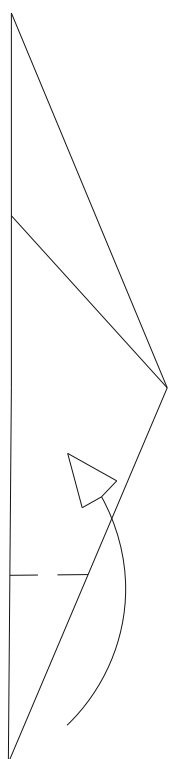
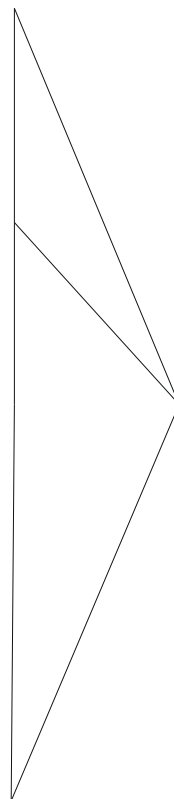
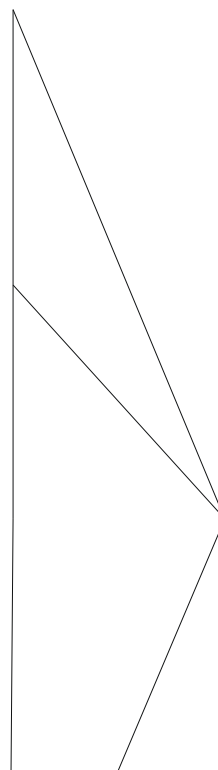


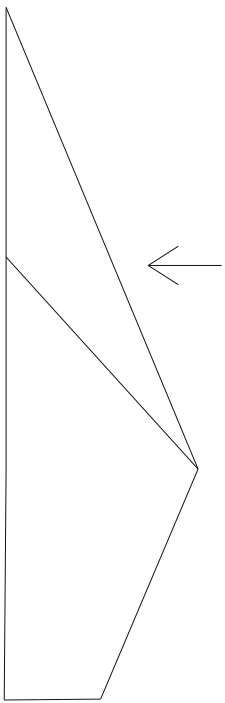
# S. GIUSEPPE

FASE 1: Si inizia dalla Fase 2  
di Magi1

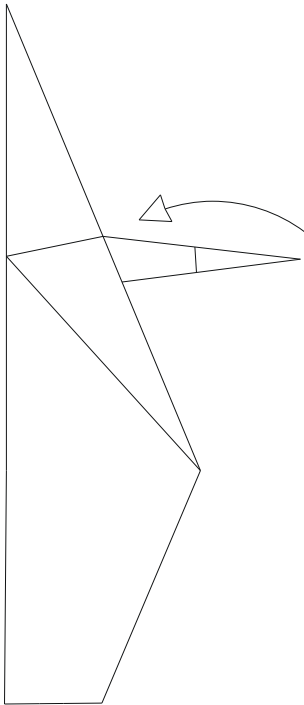


Fase 2: Piega in dentro ed  
otterrai .....

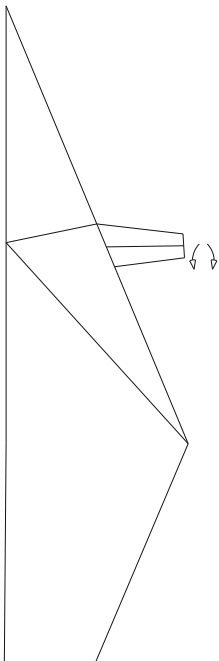




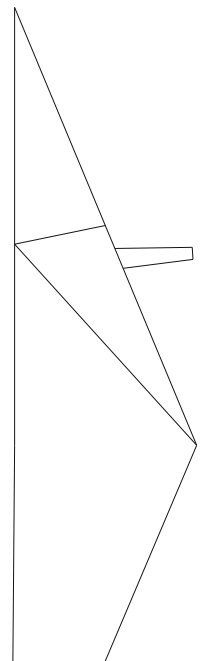
FASE 3: Piega le due alette esterne per formare le braccia



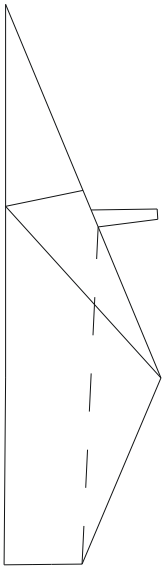
FASE 4: Ripiega dentro a metà



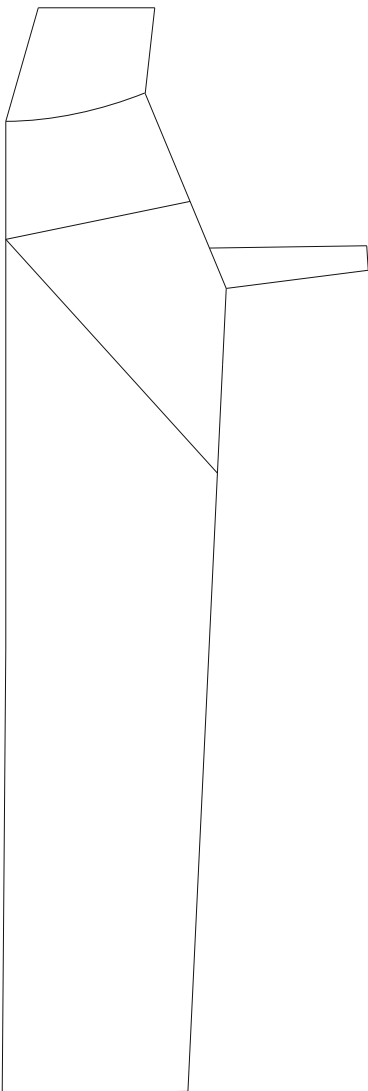
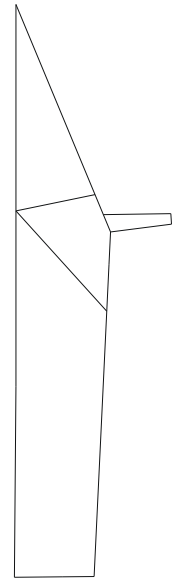
FASE 5: Ripiega ancora a metà ed ottieni .....



FASE 6: Fai lo stesso con l'altra ala e forma l'altro braccio



FASE 7: Ripiega in dentro da ambo i lati ed ottieni .....



FASE 8: Ripiega più volte su se stessa l'ala rimasta e forma la testa di S. Giuseppe .....

e la figura è terminata

ANNOTAZIONE: Con un foglio di dimensioni 12.15 x 12.15 ottieni una figura finita alta circa 6 cm.